

*"We ARE"*

# "Success"



DeShazo Elementary School  
A TEA Recognized Campus  
Campus Improvement Plan 2009/2010

## “The Journey to Success”

**Mary DeShazo Elementary School** strives daily to provide a safe, caring, positive environment for our students, staff, student assistants, and parents to work, learn, and have fun together. When one enters our doors we know they will experience a feeling of success and excitement. Our staff and students are expected to be at school and have the desire to do their best at all times. Parents are encouraged to become a partner with us in their child's learning experience. With parental support we believe that all children will attain a greater level of academic success.

All students at DeShazo Elementary are taught using the TEKS (Texas Knowledge and Skills) curriculum in all subject areas. This curriculum is organized in six-week placemats authored by grade-level teachers. The Muleshoe ISD Academic Plan guides our activities of the school year. We strive to provide an enriched curriculum to meet the needs of all our students. We monitor all student groups to ensure the needs of our migrant, Limited English Proficient (LEP), at-risk, special education, and gifted students are met. The TEKS curriculum is supported through the use of Michael Eaton – Math, My Satori/Sleek-IT software, Renaissance Place (AR & STAR), Superlab, SSI Reading and Math intervention classes and Guided Reading. The Science and Social Studies Curriculum are presented through the use of developed units, which provide hands-on active learning for our students. Fifth grade science is supplemented through the use of Science Dailies, Webcatt, and science units developed by our science staff.

DeShazo students are also given the opportunity to become a member of the *Circle of Champions*. The Circle of Champions is an honor that can be earned by all students meeting certain requirements for academic performance (passing all subjects), behavior (no more than 8 checks on behavior card), and attendance (meeting the 90% state minimum requirement). At the end of each twelve-week period, students who meet these requirements will be inducted into the Circle of Champions. Once a student makes the Circle of Champions, he/she is a member for the year. However, each twelve weeks the student will be required to meet the criteria in order to participate in the Circle of Champion's celebration. Students strive to earn this honor.

DeShazo is the home of *Muleville*, a business community located within our school walls. The Muleville Businesses are run by students and include, *The School Box (a school store)*, *the Muleville Bank (a branch of the Muleshoe State Bank)*, and *the Muleville Post Office (address books and mail delivery occur daily)*. The Muleville Board of Directors and sponsors oversee the operation of this business community. Student Directors represent each homeroom and monthly meetings teach our children how business sessions are conducted. The Muleshoe community is created again in the DeShazo halls!

DeShazo Elementary has been a TEA Recognized Campus for 4 years. We continue to strive for Exemplary status through the combined efforts of our students, teachers, administration, school board, community and parents believing in and helping each other to succeed.

We are very proud of Mary DeShazo Elementary School and the success of our students.

**Mary DeShazo Elementary School  
Campus Improvement Plan 2009-2010  
Table of Contents**

<b>Description</b>	<b>Page Number</b>
<b>Campus and District Forum Members</b>	<b>1</b>
<b>Mary DeShazo Staff Members</b>	<b>2</b>
<b>Mission Statement, Goals, Beliefs</b>	<b>3</b>
<b>Needs Assessment:</b>	
TAKS Data	<b>4 - 13</b>
Summary	<b>14</b>
<b>Campus Improvement Plan</b>	
Goal 1	<b>15 - 27</b>
Goal 2	<b>28-34</b>
Goal 3	
Goal 4	<b>35</b>
Goal 5	<b>36,37</b>
Approval Sheet – Campus Forum	<b>38</b>
Approval Sheet – DeShazo Staff	<b>39</b>
Appendix:	
A – State Comp Ed. Budget	<b>41</b>
B – NCLB Highly Qualified Plan	<b>42,43</b>

**Mary DeShazo Elementary School  
Campus Forum Members 2009-2010**

Nancy Benham	–	Teacher
Donna McFadden	–	Teacher
Tanya Steinbock	–	Teacher
Shelly Turnbow	–	Teacher
Lynda Washington	-	Teacher Assistant
Jan King	–	Non-Teaching Professional
Brian Arnold	–	District Level Representative
	–	Community Member
Delton Wilhite	–	Community Member
Tiffany Boehning	–	Parent
Josh Motsenbocker	–	Business
Debbie Gallman	-	Principal

**Mary DeShazo Elementary School  
District Forum Members 2009-2010**

Irene Mason	–	Teacher
Shelly Turnbow	–	Teacher
Nelda Wilhite	–	Special Ed.
Rebecca Sanchez	-	Bilingual/Federal Programs
Debbie Gallman	-	Principal

**Mary DeShazo Elementary School Staff  
2009-2010**

**Principal:**

Debbie Gallman

**Student Services Coordinator:**

Jan King

**Third Grade:**

Twila Arnold  
Nancy Benham  
Nora Burris  
Kami Groetken  
Desirae Gallman  
Beatriz Olivas  
Connie Alanis – Bilingual  
Letti Tovar - Bilingual  
D'Dee Ellis – Special Education

**Fourth Grade:**

Mitzi Branscum  
Terri Bohler  
Toni King  
Joanna Martinez  
Chantel Riley  
Donna McFadden  
Irene Mason  
Rebecca Sanchez - Bilingual (4 & 5)

**Fifth Grade:**

Dale Arnold  
Erin Boatmun  
Tanya Steinbock  
Debbie Kemp  
Rhonda Roberts  
Valinda Miller  
Nelda Wilhite – Special Education

**Professional Staff:**

Shelly Turnbow – Physical Education  
Peggy Burnett – Librarian  
Mikayla Stephenson - Music  
Kyra Newberry – Nurse

**Secretaries:**

Tammy Frieda  
Estella Duarte

**Custodians:**

Mart Long  
Luis Quintana

**Diagnostician:**

Cindy Bessire

**Teacher Assistants:**

Rachel Alvarado  
Maria Garcia  
Goya Franco  
Maria Garcia  
Bea Garcia  
Lynda Washington  
Brittney Alvarado  
Laura Mora

**Cafeteria:**

Margaret Stevens -Manager

**MULESHOE INDEPENDENT SCHOOL DISTRICT  
2009/2010  
MISSION STATEMENT**

The Mission of the Muleshoe Independent School District is to graduate life-long learners and productive citizens by providing an instructional program and educational environment that develops the skills, attitudes, and ethics necessary to meet the needs of a changing society.

**BELIEFS**

In Muleshoe ISD, we believe that:

- All students should be given the opportunity and encouragement to excel academically and socially.
- The school community should foster a positive, interactive relationship with the public and within the district itself.
- Technology should be an integral part of learning for students, staff, and community.

**MARY DESHAZO ELEMENTARY MISSION STATEMENT**

The Mission statement of Mary DeShazo Elementary is to provide a warm, safe learning environment with opportunities for all students to become responsible leaders and productive critical thinkers with high self-esteem.

**DISTRICT GOALS  
2009/2010**

**Goal 1:** *MISD will provide a comprehensive instructional environment to ensure that all students meet graduation requirements.*

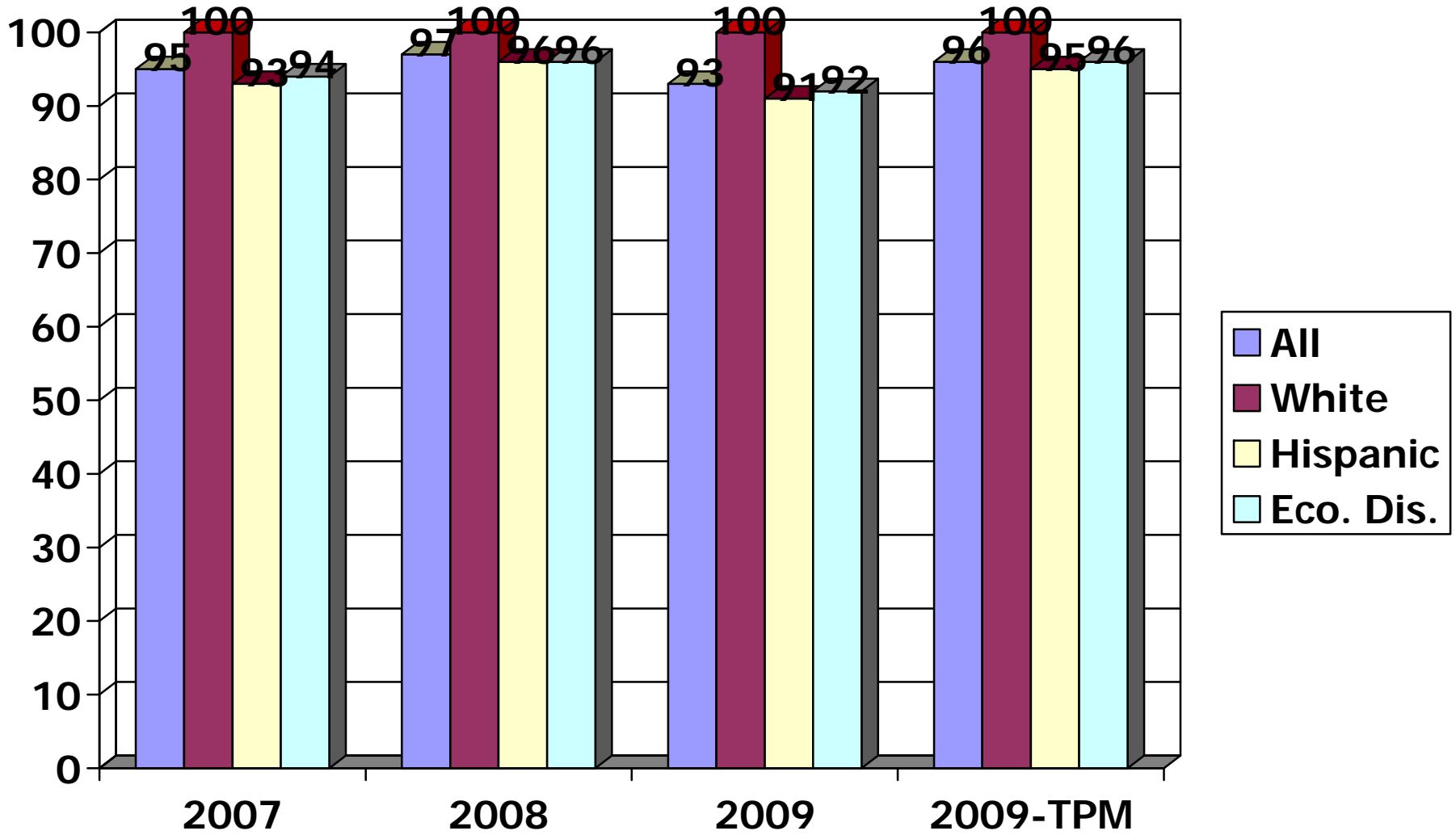
**Goal 2:** *MISD will incorporate proactive and consistent strategies to promote parental involvement and to address student respect and discipline.*

**Goal 3:** *MISD will provide vocational opportunities and guidance for college level preparation and enrichment through a challenging curriculum.*

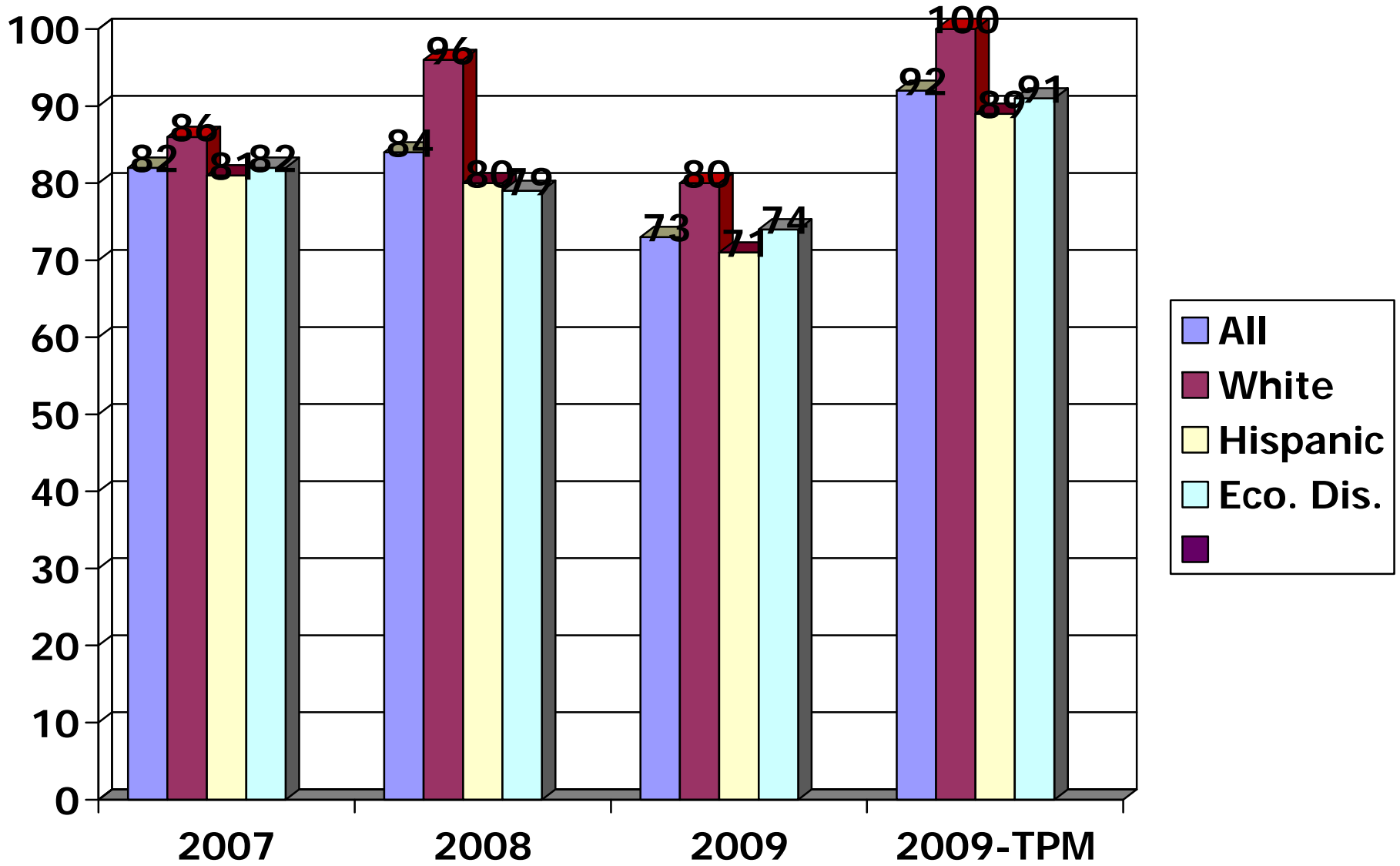
**Goal 4:** *MISD will recruit and maintain a highly qualified staff and meet the education needs of all students.*

**Goal 5:** *MISD will incorporate strategies to communicate with all parents and community members.*

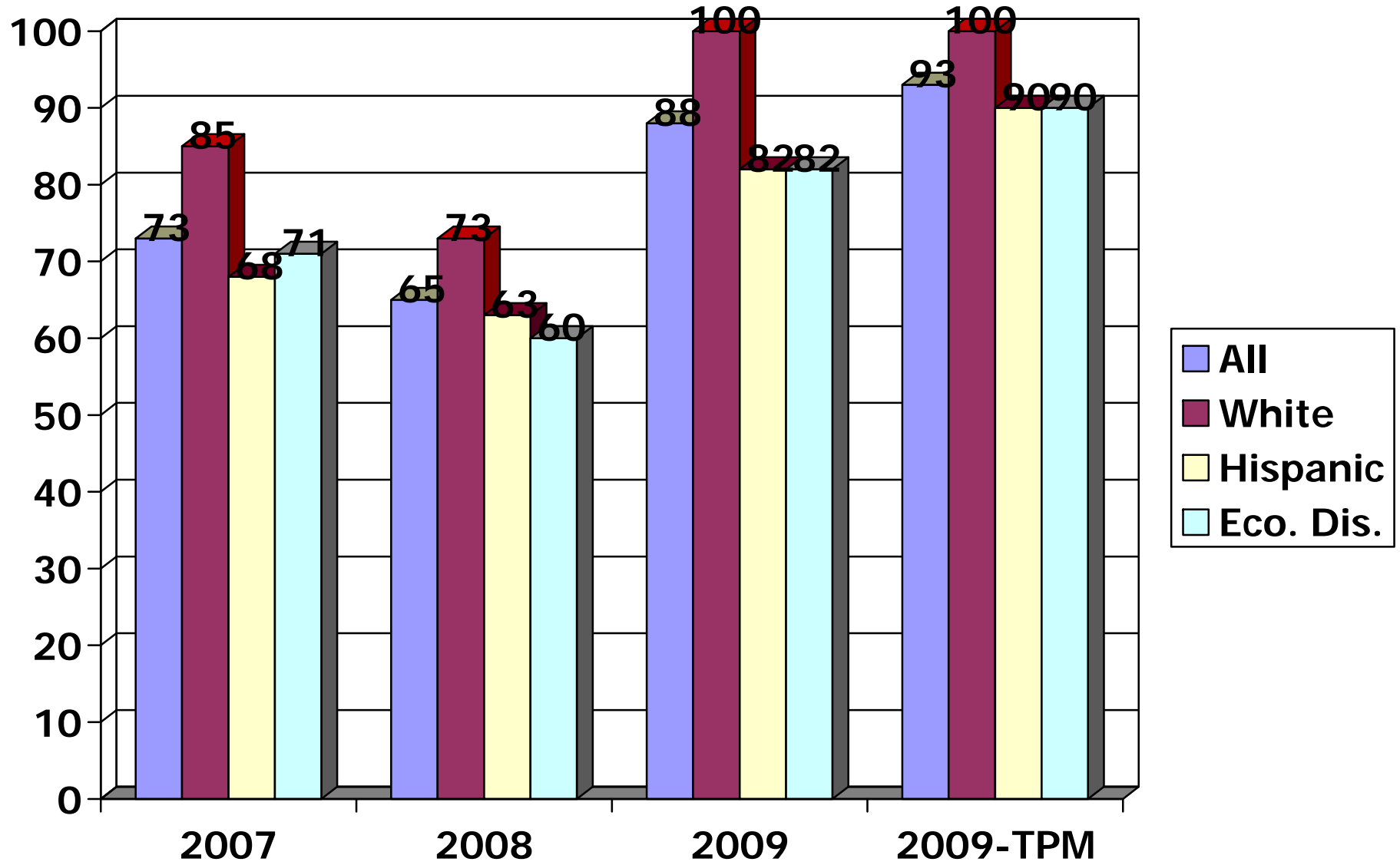
# Third Grade Reading



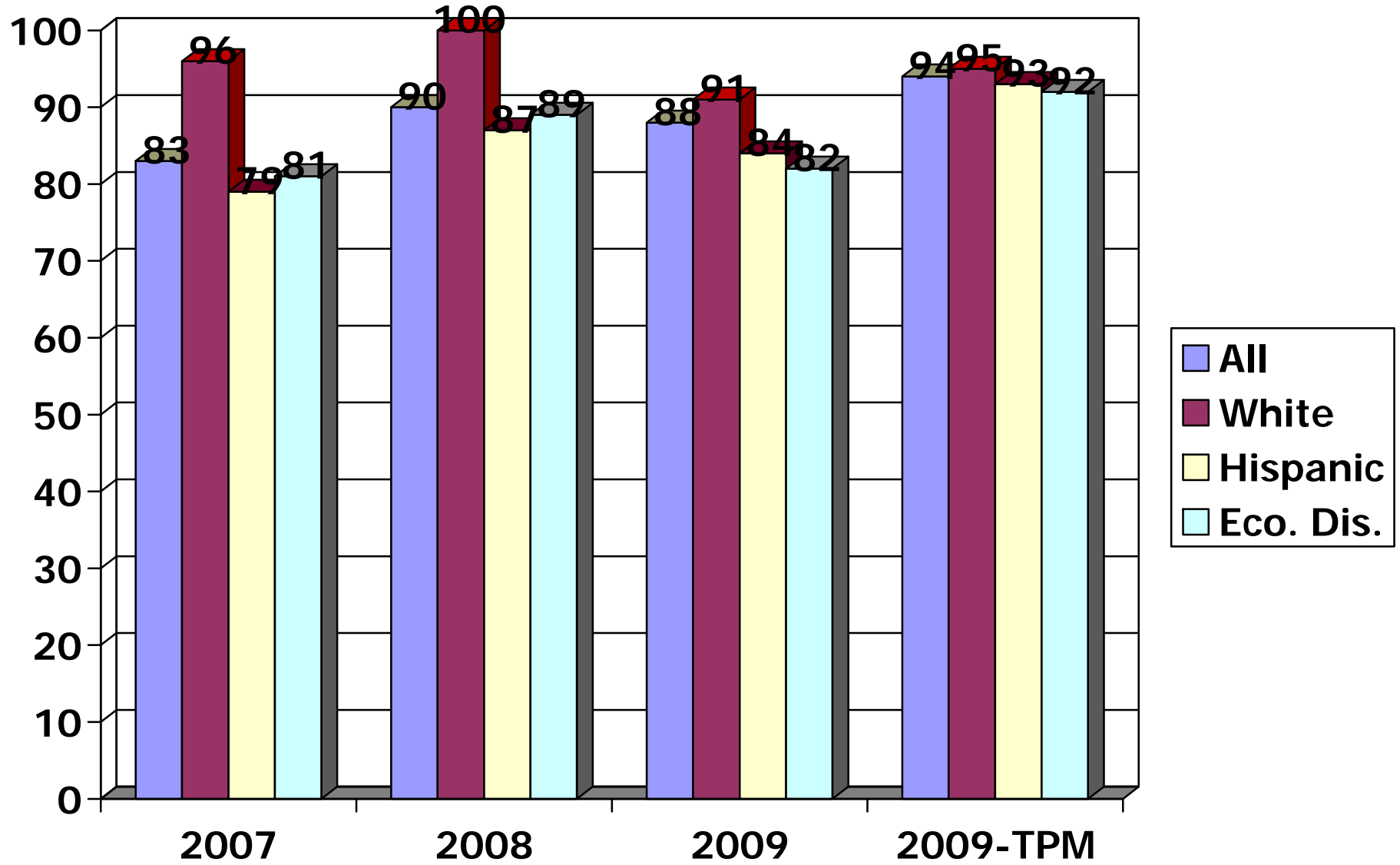
# Third Grade Math



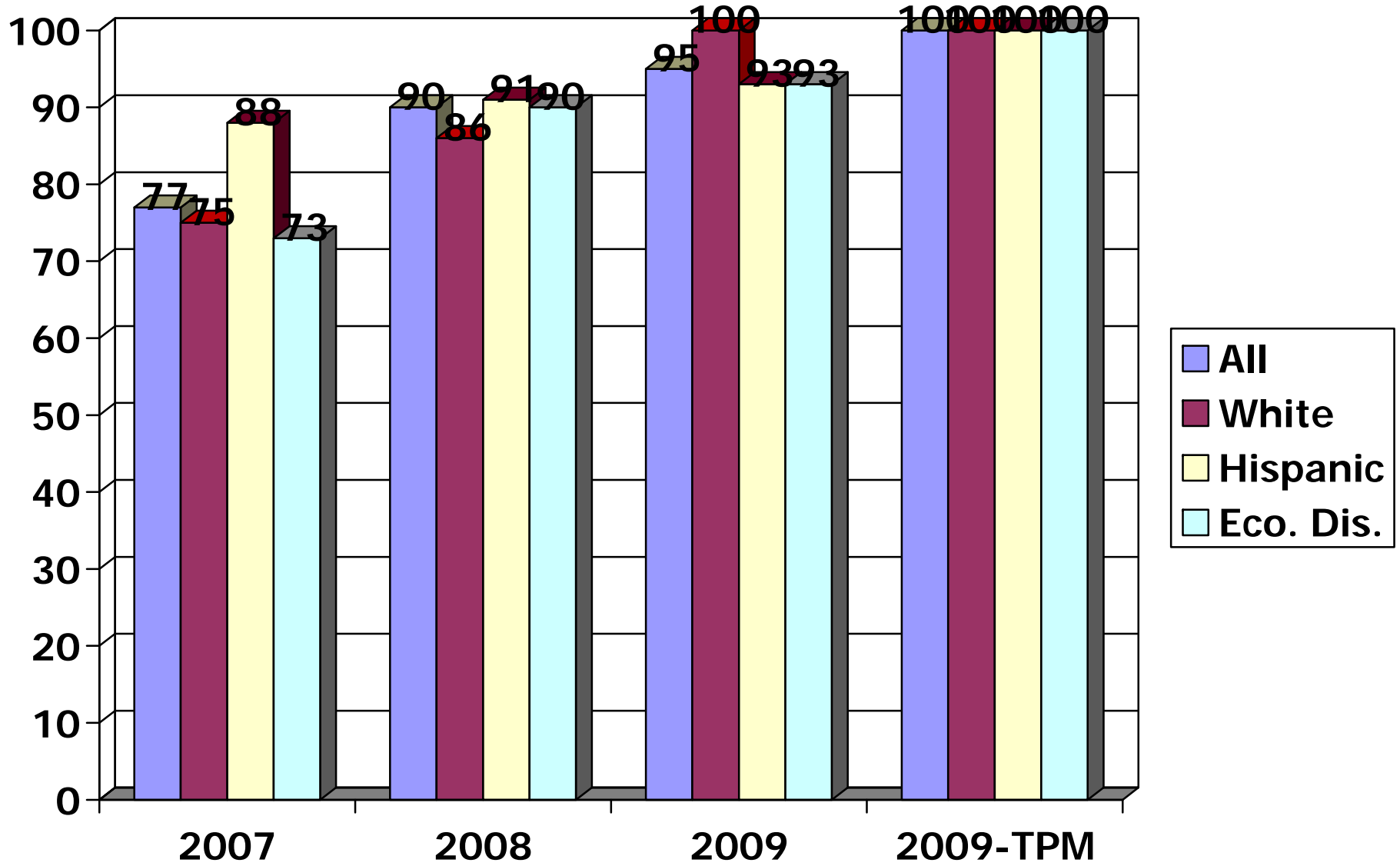
# Fourth Grade Reading



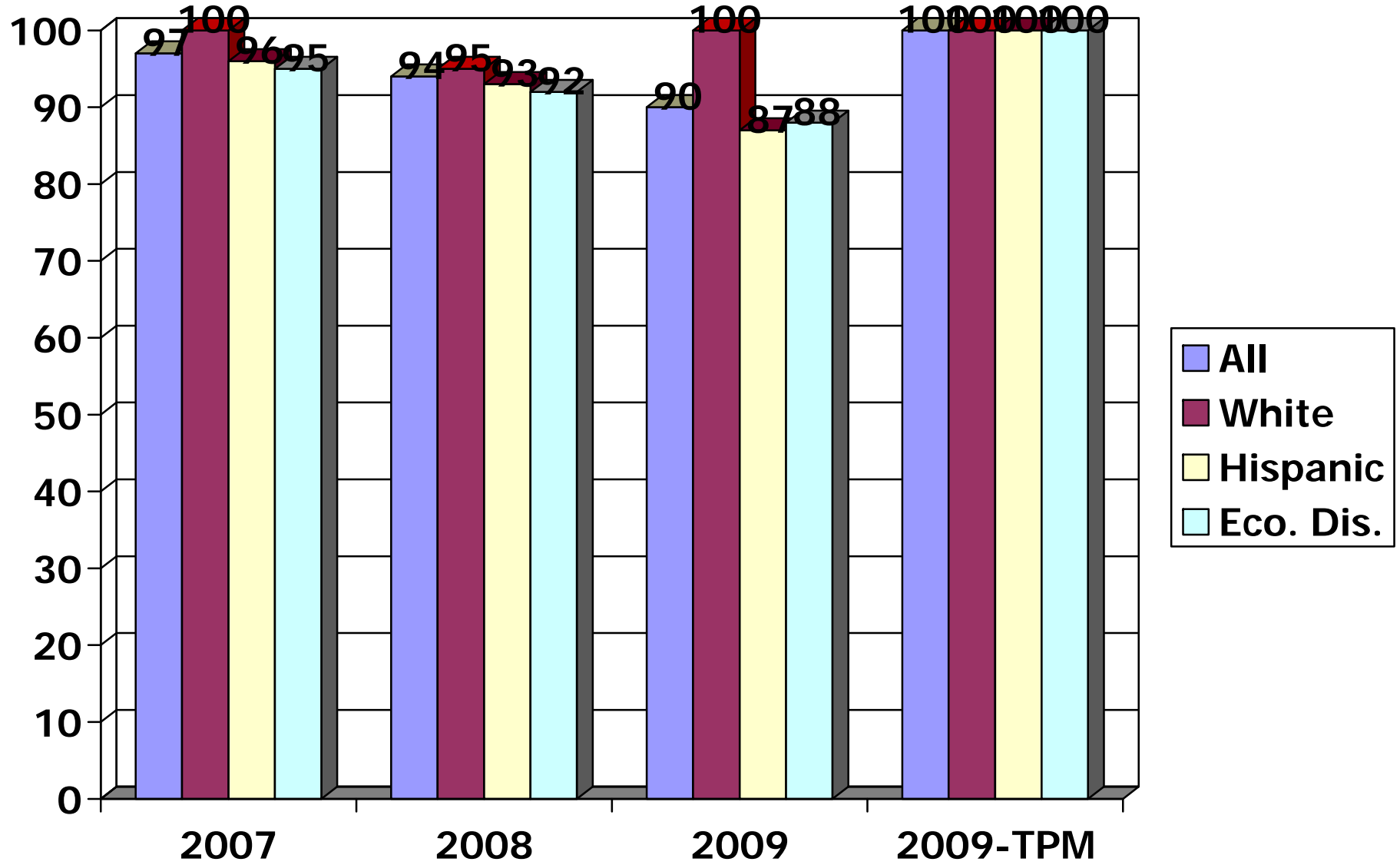
# Fourth Grade Math



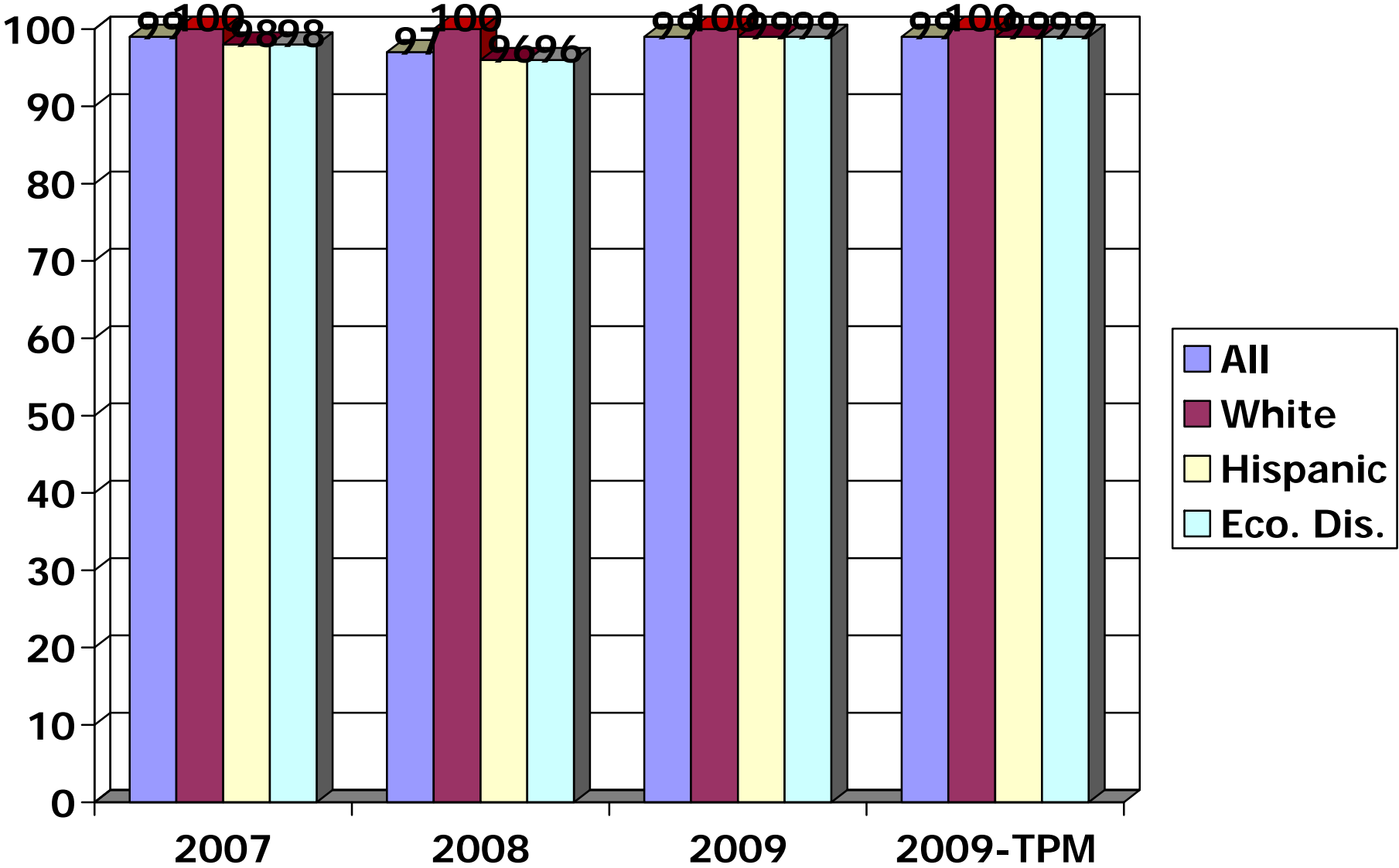
# Fourth Grade Writing



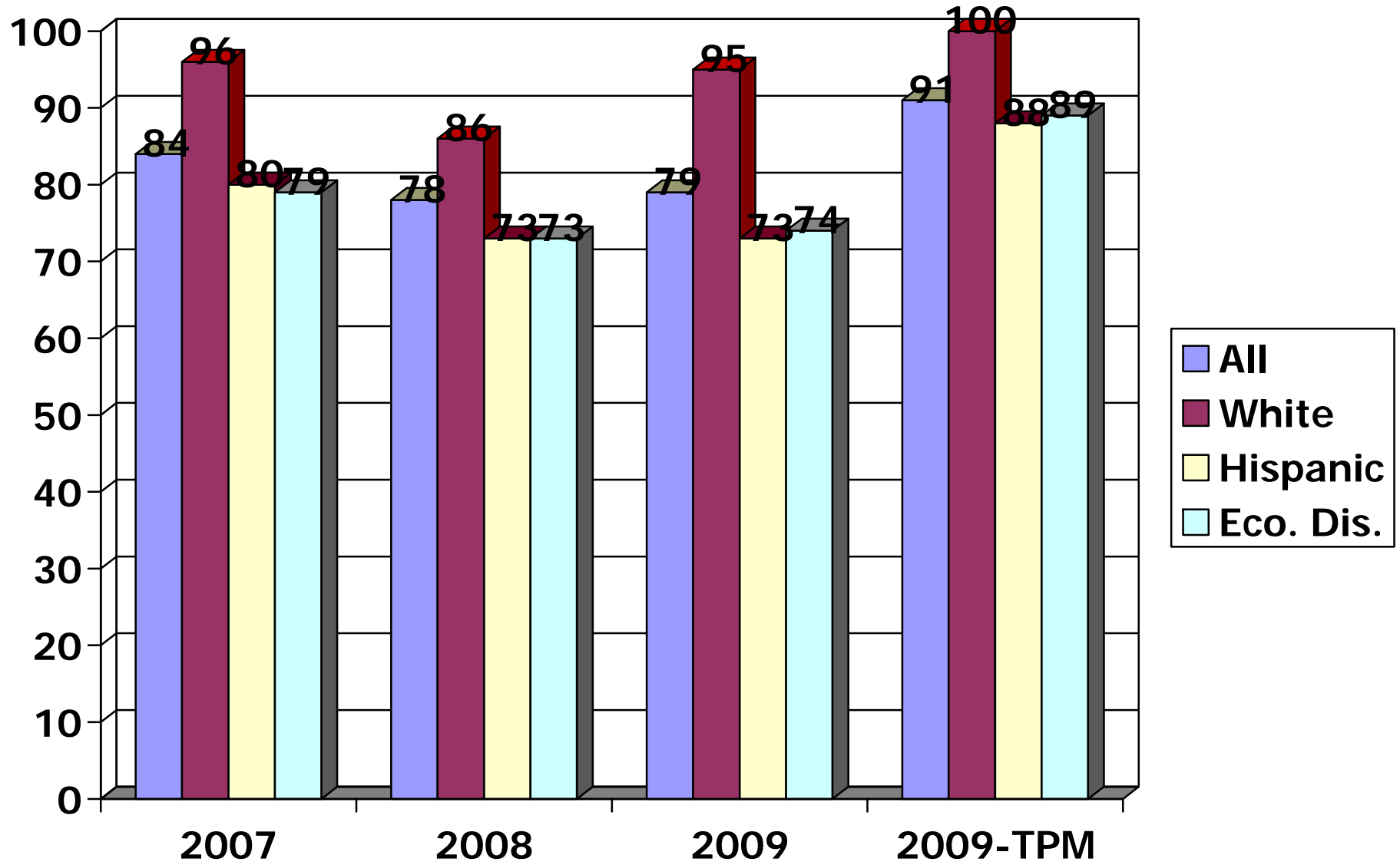
# Fifth Grade Reading



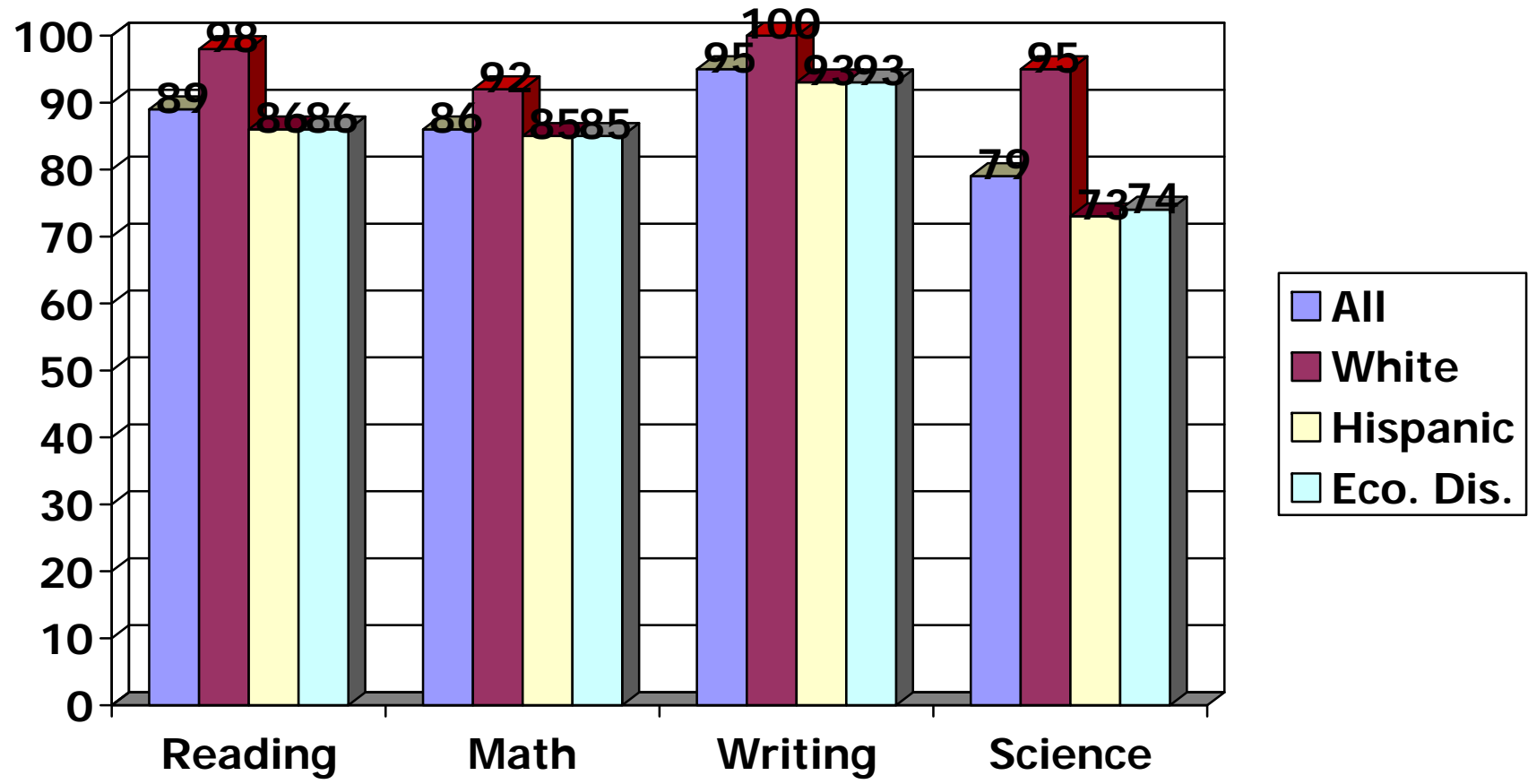
# Fifth Grade Math



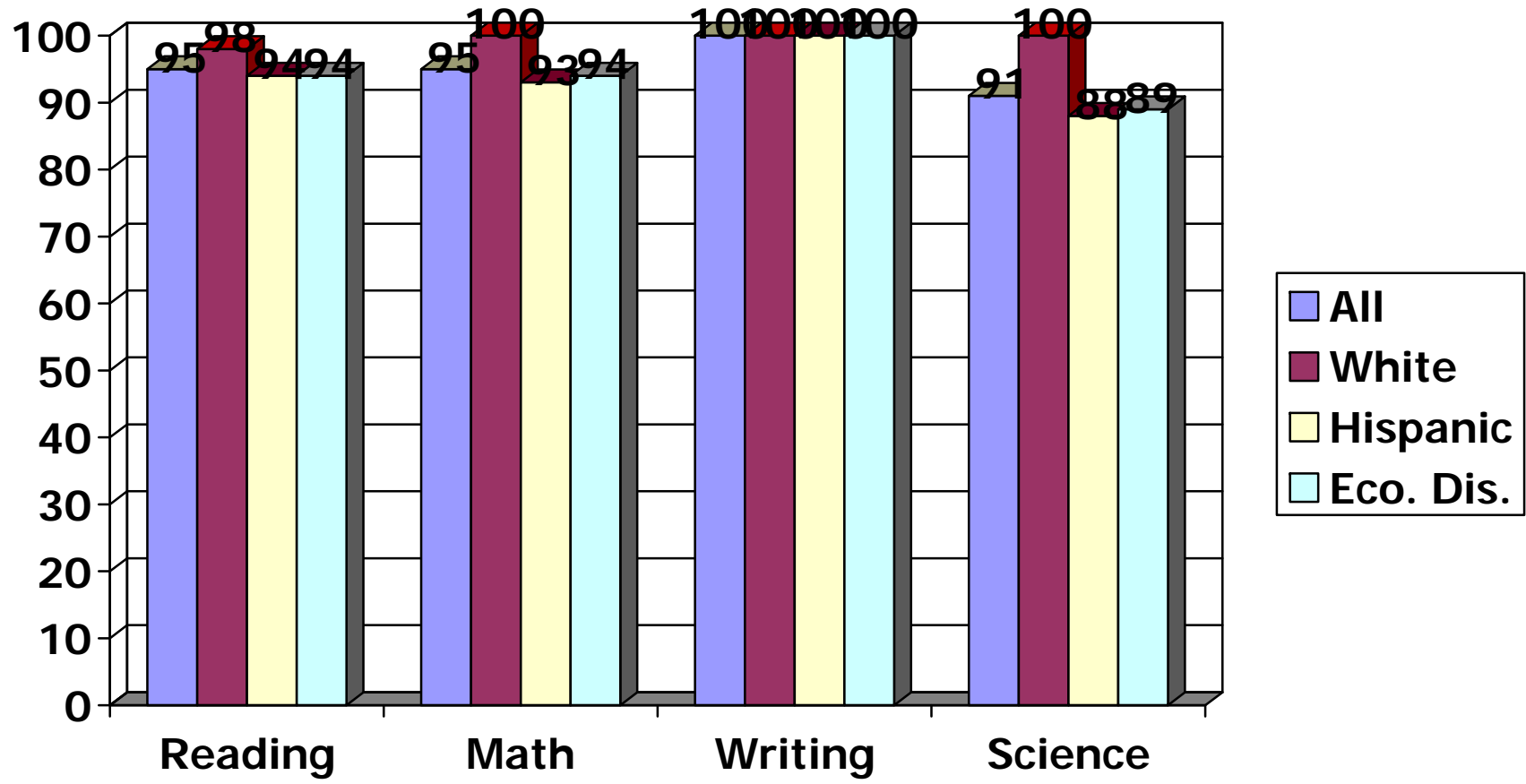
# Fifth Grade Science



# Accountability Tables - NO TPM



# Accountability Tables



## **Comprehensive Needs Assessment Summary**

MISD Board and Administration identified top priority critical needs. These identified needs, TAKS (Texas Assessment of Academic Skills) student performance data, attendance data; parent, student, and staff surveys; and facility needs were reviewed by faculty in staff meetings and campus forum. Based upon information provided the following campus needs were identified:

- A. Discipline - Safe learning environment/respect/relationships**
  - B. Character Development – respect/relationships**
  - C. TAKS Scores**
  - D. Curriculum Needs – Changes in TAKS Test**
  - E. Hire/Retain personnel**
  - F. Counseling needs for students**
  - G. Instruction expectations during construction**
  - H. Communication**
  - I. Bullying**
  - J. Increase/Changes in student population**
  - K. Needs of Bilingual Students**
  - L. Needs of Special Education Students**
  - M. Needs of Migrant Students/Student Mobility**
- (A – M serves as a key for Needs Assessment column in the Campus Plan)**

**MARY DESHAZO ELEMENTARY SCHOOL  
2009 - 2010 Campus Improvement Plan**

**Schoolwide Component**  
 R = Reform Strategies  
 I = Instruction by Highly Qualified Staff  
 PD = Professional Development  
 H = Highly Qualified Staff  
 PI = Parental Involvement  
 T = Transition  
 A = Assessment  
 M = Accelerated Instruction for Mastery  
 CP = Coordination of all programs

**GOAL 1:**  
*DeShazo will provide a comprehensive instructional environment to ensure all students meet grade promotion requirements.*

**Objective:**  
 1. All LEP students will become proficient in English and reach high academic standards, at a minimum attaining proficiency/mastery in reading/language arts and math.

Needs Assmt	Action(s) Implementation(s)	SW Comp.	Spec. Prog Pops	Person(s) Responsible	Timeline Start/End	Resources				
						Human	Material	Fiscal	Formative	Summative
C,D,K	1. The TEKS curriculum will be supplemented to meet the needs of the LEP student.	I, M	LEP Students	Principal Bilingual Teacher	Aug. 09/ May 10		LEP Resources	L, S, T3, F	Increase in LEP Student Achievement.	Student Success as measured by grades and TAKS
D	2. Curriculum Placemats and classroom instruction will incorporate ELPS.	R	LEP Students	Principal Teachers	Aug. 09/ May 10	Staff Members	Curr. Document	L	Increase in LEP Student Achievement.	Student Success as measured by grades and TAKS
C,D,K	3. Campus Benchmarks and Assessments will be provided in English and Spanish.	R A	LEP Students	Principal Dir. Of Student Ser.	Aug. 09/ May 10		Bilingual Test Materials	L, B, T3	Increase in LEP Student Achievement.	Student Success as measured by grades and TAKS
C,D,K	4. CAI Lab will provide supplemental instruction at student level in reading and math. Growth reports will be prepared	R A CP	LEP Students	MySatori Lab Manager	Aug. 09/ May 10		MySatori Lab	L,T1 SCE	Increase in LEP Student Achievement.	Student Success as measured by grades and TAKS
K	5. Teacher Assistants will support classroom instruction.	I	LEP Students	Teacher	Aug. 09/ May 10	Teacher Assistant		L S	Increase in LEP Student Achievement.	Student Success as measured by grades and TAKS
D,K	6. Teachers will receive training to implement strategies which focus on cognitive, linguistic and affective needs of LEP student.	PD	LEP Students	Principal	Aug. 09/ May 10	Region 17 NABE		T3, T1, L	Increase in LEP Student Achievement.	Student Success as measured by grades and TAKS

**Codes for Funding: S-State**

**L-Local**

**F-Federal**

**T1-Title I**

**T2-Title 2**

**T3-Title 3**

**C-Compensatory**

**A-ARI/AMI**

**MARY DESHAZO ELEMENTARY SCHOOL  
2009 - 2010 Campus Improvement Plan**

**Schoolwide Component**  
 R = Reform Strategies  
 I = Instruction by Highly Qualified Staff  
 PD = Professional Development  
 H = Highly Qualified Staff  
 PI = Parental Involvement  
 T = Transition  
 A = Assessment  
 M = Accelerated Instruction for Mastery  
 CP = Coordination of all programs

**GOAL 1:**  
*DeShazo will provide a comprehensive instructional environment to ensure all students meet grade promotion requirements.*

**Objective:**  
 1. All LEP students will become proficient in English and reach high academic standards, at a minimum attaining proficiency/mastery in reading/language arts and math.

Needs Assmt	Action(s) Implementation(s)	SW Comp.	Spec. Prog Pops	Person(s) Responsible	Timeline Start/End	Resources				
						Human	Material	Fiscal	Formative	Summative
C,D,K	7. Students who have limited learning language will be placed in reading intervention classes.	R,I,CP	LEP Students	Principal Bilingual Teachers	Aug. 09/ May 10	Intervention Teacher	Test Curriculum	L	Increase in LEP Student Achievement.	Student Success as measured by grades and TAKS
R,T	8. LPAC folders will be updated at the end of the school year.	T,CP	LEP Students	Dir. Of Student Services	May 10 - July 2010	Teacher LPAC Parent	LPAC Folders	L	Increase in LEP Student Achievement.	Student Success as measured by grades and TAKS
A,M	9. Develop individual student success plans for LEP students who do not show mastery on first administration of TAKS reading test.	A,M	LEP Students	Principal Bilingual Teacher	March 2010	Teacher	Student Success Plan		Increase in LEP Student Achievement.	Student Success as measured by grades and TAKS
C,D,K	10. Students will be immersed into English language as soon as possible.	R	LEP Students	Bilingual Teacher Principal	Aug. 09/ May 10	Teacher			Increase in LEP Student Achievement.	Student Success as measured by grades and TAKS
D	11. DeShazo elementary will adhere to district Bilingual Plan.	R	LEP Students	Principal Dir. Student Services	Aug. 09/ May 10				Increase in LEP Student Achievement.	Student Success as measured by grades and TAKS
A	12. LPAC meetings will be held before each testing date to assure appropriate TAKS testing decisions are made.	R,A	LEP Students	Dir. Of Student Services	Feb. 10/ July 10	LPAC	LPAC Folders Test		Increase in LEP Student Achievement.	Student Success as measured by grades and TAKS
C,K	13. Parents who deny Bilingual services will be counseled.	R, PI	LEP Students	Dir. Of Student Services	Aug. 09/ May 10		LPAC Folders		Decrease in number of denials	Student Success as measured by grades and TAKS
J	14. Additional Bilingual Teacher to accommodate 3 <sup>rd</sup> grade student needs.	R, CP	LEP Students	Principal	Aug. 09/ May 10	Teacher		L	Increase in LEP Student Achievement.	Student Success as measured by grades and TAKS

**Codes for Funding: S-State**

**L-Local**

**F-Federal**

**T1-Title I**

**T2-Title 2**

**T3-Title 3**

**C-Compensatory**

**A-ARI/AMI**

**MARY DESHAZO ELEMENTARY SCHOOL  
2009 - 2010 Campus Improvement Plan**

**Schoolwide Component**  
 R = Reform Strategies  
 I = Instruction by Highly Qualified Staff  
 PD = Professional Development  
 H = Highly Qualified Staff  
 PI = Parental Involvement  
 T = Transition  
 A = Assessment  
 M = Accelerated Instruction for Mastery  
 CP = Coordination of all programs

**GOAL 1:**  
*DeShazo will provide a comprehensive instructional environment to ensure all students meet grade promotion requirements.*

**Objective:**  
 2. All migrant students will become proficient and reach high academic standards, at a minimum attaining proficiency/mastery in reading/language arts and math.

Needs Assmt	Action(s) Implementation(s)	SW Comp.	Spec. Prog Pops	Person(s) Responsible	Timeline Start/End	Resources			Evaluation	
						Human	Material	Fiscal	Formative	Summative
C,D,M	1. The migrant student will be assessed to determine learning gaps which may exist.	R	Migrant Students	Teacher	Aug. 09/ May 10		Campus Assessments	L	Increase in Migrant Achievement.	Student Success as measured by grades and TAKS
A,M	2. The migrant student will not be penalized for days missed due to migratory moves.	R	Migrant Students	Principal Secretary	Aug. 09/ May 10		Student Records	L	Increase in Migrant Achievement.	Student Success as measured by grades and TAKS
C,D,M	3. Priority of services for migrant students will include placement into TAKS academies/SSI classes as need is identified.	R	Migrant Students	Principal Teachers	Aug. 09/ May 10		Campus Assessments	L, T1, ARI	Increase in Migrant Achievement.	Student Success as measured by grades and TAKS
C,D,M	4. Campus Benchmarks and Assessments will be provided in English and Spanish.	R A	Migrant Students	Principal Dir. Of Student Ser.	Aug. 09/ May 10		Bilingual Test Materials	L, B, T1	Increase in Migrant Achievement.	Student Success as measured by grades and TAKS
C,D,M	5. CAI Lab will provide supplemental instruction in reading and math using MySatori software.	R A CP	Migrant Students	MySatori Lab Manager	Aug. 09/ May 10		MySatori Lab	L	Increase in Migrant Achievement.	Student Success as measured by grades and TAKS
M	6. Teacher Assistants will support classroom instruction.	I	Migrant Students	Teacher	Aug. 09/ May 10	Teacher Assistant		L S	Increase in Migrant Achievement.	Student Success as measured by grades and TAKS
M	7. School Supply/Clothing/health needs will be assessed and provided.	R, PI	Migrant Students	Principal Nurse	Ongoing	Nurse MEP Staff		T1	Increase in Migrant Achievement.	Student Success as measured by grades and TAKS
M	8. Teachers will be provided lists of Migrant students with highest priority noted.	CP	Migrant Students	MEP Staff	Aug. 09/ May 10	MEP Staff	List	T1	Increase in Migrant Achievement.	Student Success as measured by grades and TAKS
M	9. Migrant students will be encouraged to attend Project MAP	R,CP	Migrant Students	MEP Staff	Aug. 09/ May 10	MEP Staff	List		Increase in Migrant Achievement.	Student Success as measured by grades and TAKS

**Codes for Funding: S-State L-Local F-Federal T1-Title I T2-Title 2 T3-Title 3 C-Compensatory A-ARI/AMI**

**MARY DESHAZO ELEMENTARY SCHOOL  
2009 - 2010 Campus Improvement Plan**

**Schoolwide Component**  
 R = Reform Strategies  
 I = Instruction by Highly Qualified Staff  
 PD = Professional Development  
 H = Highly Qualified Staff  
 PI = Parental Involvement  
 T = Transition  
 A = Assessment  
 M = Accelerated Instruction for Mastery  
 CP = Coordination of all programs

**GOAL 1:**  
*DeShazo will provide a comprehensive instructional environment to ensure all students meet grade promotion requirements.*

**Objective:**  
 3. All special education students will become proficient and reach high academic standards, at a minimum attaining proficiency/mastery in core subjects as defined by ARD in IEP.

Needs Assmt	Action(s) Implementation(s)	SW Comp.	Spec. Prog Pops	Person(s) Responsible	Timeline Start/End	Resources				
						Human	Material	Fiscal		
									Formative	Summative
C,D,L	1. The ARD Committee will approve goals and objectives for the Special Education students.	R	Sp. Ed. Students	Dir. Student Services Principal	Aug 09- May 10	Sp. Ed. Teachers	IEPS, CLASS	SPED	Increase in Sp.Ed. Student Achievement.	Success measured by grades and TAKS TAKSM/TAKSA
C,D,L	2. Modifications will be made according to IEP Guidelines and will be recorded in purple folder.	R	Sp. Ed. Students	Teachers	Aug 09- May 10	Teachers	Purple Folders	SPED	Increase in Sp.Ed. Student Achievement.	Success measured by grades and TAKS TAKSM/TAKSA
C,D,L	3. Referrals to Sp.Ed. will reflect guidelines and decision of SAT team.	R	Sp. Ed. Students	Dir. Student Services Teachers	Aug 09- May 10	SAT Team	SAT Guidelines	SPED	Increase in Sp.Ed. Student Achievement.	Success measured by grades and TAKS TAKSM/TAKSA
C,D,L	4. Campus Benchmarks and Assessments will be provided at with modifications as per IEP.	R A	Sp. Ed. Students	Principal Teachers	Aug 09- May 10		Test Materials	L, SPED	Increase in Sp.Ed. Student Achievement.	Success measured by grades and TAKS TAKSM/TAKSA
C,D,L	5. CAI Lab will provide supplemental instruction at student level in reading and math using MySatori software. Growth reports will be prepared.	R A CP M	Sp. Ed. Students	MySatori Lab Manager Teacher	Aug 09- May 10		MySatori Lab	L SPED C	Increase in Sp.Ed. Student Achievement.	Success measured by grades and TAKS TAKSM/TAKSA
C,D,L	6. Teacher Assistants will support classroom instruction.	I	Sp. Ed. Students	Teacher	Aug 09- May 10	Teacher Assistant		SPED	Increase in Sp.Ed. Student Achievement.	Success measured by grades and TAKS TAKSM/TAKSA
C,D,L	7. Superlab (Content Mastery Lab) will provide support for special education students.	PD	Sp. Ed. Students	Teachers Content Mastery	Aug. 09/ May 10	Teacher		SPED	Increase in Sp.Ed. Student Achievement.	Success measured by grades and TAKS TAKSM/TAKSA

**Codes for Funding: S-State      L-Local      F-Federal      T1-Title I      T2-Title 2      T3-Title 3      C-Compensatory      A-ARI/AMI**

**MARY DESHAZO ELEMENTARY SCHOOL  
2009 - 2010 Campus Improvement Plan**

**Schoolwide Component**  
 R = Reform Strategies  
 I = Instruction by Highly Qualified Staff  
 PD = Professional Development  
 H = Highly Qualified Staff  
 PI = Parental Involvement  
 T = Transition  
 A = Assessment  
 M = Accelerated Instruction for Mastery  
 CP = Coordination of all programs

**GOAL 1:**  
*DeShazo will provide a comprehensive instructional environment to ensure all students meet grade promotion requirements.*

**Objective:**  
 3. All special education students will become proficient and reach high academic standards, at a minimum attaining proficiency/mastery in core subjects as defined by ARD in IEP.

Needs Assmt	Action(s) Implementation(s)	SW Comp.	Spec. Prog Pops	Person(s) Responsible	Timeline Start/End	Resources				
						Human	Material	Fiscal	Formative	Summative
C,D,L	8. Special Ed. teachers and regular ed teachers will meet every 3 weeks to evaluate student progress.	R	Sp. Ed. Students	Dir. Student Services Principal Teachers	Aug 09- May 10	Sp. Ed. Teachers	IEP Goals Purple Folders	SPED	Increase in Sp.Ed. Student Achievement.	Success measured by grades and TAKS TAKSM/TAKSA
D,L	9. Staff development on "need to know" will be provided for all teachers.	PD	Sp. Ed. Students	Dir. Of SPED	Aug 09	Sp. Ed. Director			Increase in Sp.Ed. Student Achievement.	Success measured by grades and TAKS TAKSM/TAKSA
C,D,L	10. SAT team will be trained and exhibit best practice.	PD	Sp. Ed. Students 504 Students	Dir. Of SPED Dir Student Services	Aug. 09/ May 10	Sp. Ed. Director Dir. Student Services	Training Materials SAT Forms		Number of referrals decreased and referrals going to Sp.Ed. qualify.	Success measured by grades and TAKS TAKSM/TAKSA
C,D,L	11. DeShazo will comply with District Special Education Plan	R	Sp. Ed. Students	Principal	Aug 09- May 10				Increase in Sp.Ed. Student Achievement.	Success measured by grades and TAKS TAKSM/TAKSA
L	12. DeShazo will strive to reduce the number of students exempt from TAKS and will provide accelerated instruction in order to have students close to grade level.	R,A	Sp. Ed. Students	Principal Dir. Student Services	Aug 09- May 10				Increase in Sp.Ed. Student Achievement.	Success measured by grades and TAKS TAKSM/TAKSA
L	13. State Guidelines will be followed to ensure 3 test administrations for students are given in required areas.	R,A	5 <sup>th</sup> grade Sp. Ed. Students	Principal Sp.Ed. Teachers	Feb. 10 - May 10			SPED	Increase in Sp.Ed. Student Achievement.	Success measured by grades and TAKS TAKSM/TAKSA

**Codes for Funding: S-State**

**L-Local**

**F-Federal**

**T1-Title I**

**T2-Title 2**

**T3-Title 3**

**C-Compensatory**

**A-ARI/AMI**

**MARY DESHAZO ELEMENTARY SCHOOL  
2009 - 2010 Campus Improvement Plan**

**Schoolwide Component**  
 R = Reform Strategies  
 I = Instruction by Highly Qualified Staff  
 PD = Professional Development  
 H = Highly Qualified Staff  
 PI = Parental Involvement  
 T = Transition  
 A = Assessment  
 M = Accelerated Instruction for Mastery  
 CP = Coordination of all programs

**GOAL 1:**  
*DeShazo will provide a comprehensive instructional environment to ensure all students meet grade promotion requirements.*

**Objective:**  
 4. All GT students will reach high academic standards.

Needs Assmt	Action(s) Implementation(s)	SW Comp.	Spec. Prog Pops	Person(s) Responsible	Timeline Start/End	Resources				
						Human	Material	Fiscal		
									Formative	Summative
C,D	1. CAI Lab will be used to provide accelerated instruction in reading and math.	R	GT Students	MySatori Lab Principal	Aug 09- May 10		MySatori Lab	L, C	Increase in GT Student Achievement.	Success measured by grades and TAKS.
	2. GT students will receive differentiated instruction in the regular classroom setting.	I	GT Students	Teachers Principal	Aug 09- May 10		Curr. Resources	L	Increase in GT Student Achievement.	Success measured by grades and TAKS.
	3. GT teacher will complete 30 hour GT training.	PD	GT Students	Teacher Principal	Summer 2009	GT Teacher	Training	L T3	Increase in GT Student Achievement.	Success measured by grades and TAKS.
	4. GT students will participate in GT field trips to extend curriculum.	I	GT Students	Principal	Aug-09 – Jan 10	GT Teacher		L T3	Increase in GT Student Achievement.	Success measured by grades and TAKS.
	5. GT students will be encouraged to participate in UIL events.	I	GT Students	Principal	Ongoing		UIL Materials	L	Increase in GT Student Achievement.	Success measured by grades and TAKS.
D,H	6. An annual nomination process will be in place and assessment will consist of both qualitative and quantitative measures.	A	GT Students	Dir. of Student Services	Oct. 09 – March 10		Testing Materials	L		Success measured by grades and TAKS.
D	7. GT students will participate in a one hour pullout program per week	R	GT Students	Principal	Aug 09 – May 10	GT Teacher		GT L	Increase in GT Student Achievement.	Success measured by grades and TAKS.

**Codes for Funding: S-State      L-Local      F-Federal      T1-Title I      T2-Title 2      T3-Title 3      C-Compensatory      A-ARI/AMI**

**MARY DESHAZO ELEMENTARY SCHOOL  
2009 - 2010 Campus Improvement Plan**

**GOAL 1:**  
*DeShazo will provide a comprehensive instructional environment to ensure all students meet grade promotion requirements..*

**Objective:**  
5. Students identified as having dyslexia will be provided services to become proficient and reach high academic standards, at a minimum attaining proficiency/mastery on TAKS.

**Schoolwide Component**  
 R = Reform Strategies  
 I = Instruction by Highly Qualified Staff  
 PD = Professional Development  
 H = Highly Qualified Staff  
 PI = Parental Involvement  
 T = Transition  
 A = Assessment  
 M = Accelerated Instruction for Mastery  
 CP = Coordination of all programs

Needs Assmt	Action(s) Implementation(s)	SW Comp.	Spec. Prog Pops	Person(s) Responsible	Timeline Start/End	Resources			Evaluation	
						Human	Material	Fiscal	Formative	Summative
C,D	1. Students in grades 3, 4, 5 identified as at-risk of reading difficulties will be screened for dyslexia services.	R	All Students	Dir. Student Services	Aug 09-May 10		Screening Tests	L, C	Increase in dyslexia Student Achievement.	Success measured by grades and TAKS.
C,D	2. Students identified as dyslexic will receive additional daily instruction in reading SSI classes.	I	Dyslexia Students	Dir. Student Services. Reading Teacher	Oct 09-May 10		Lindamood Phonics Materials	L, T1, C	Increase in dyslexia Student Achievement.	Success measured by grades and TAKS.
C,D	3. Identified dyslexic students will be referred to the 504 process and will receive modifications as per 504 plans.	I	Dyslexia Students	Dir. Student Services. Reg. Ed. Teacher	Aug 09-May 10	Staff	504 Guidelines	L, T1,C	Increase in dyslexia Student Achievement.	Success measured by grades and TAKS.

**MARY DESHAZO ELEMENTARY SCHOOL  
2009 - 2010 Campus Improvement Plan**

**Schoolwide Component**  
 R = Reform Strategies  
 I = Instruction by Highly Qualified Staff  
 PD = Professional Development  
 H = Highly Qualified Staff  
 PI = Parental Involvement  
 T = Transition  
 A = Assessment  
 M = Accelerated Instruction for Mastery  
 CP = Coordination of all programs

**GOAL 1:**  
*DeShazo will provide a comprehensive instructional environment to ensure all students meet grade promotion requirements..*

**Objective:**  
 6. All students will become proficient and reach high academic standards, at a minimum attaining proficiency/mastery in core subjects.

Needs Assmt	Action(s) Implementation(s)	SW Comp.	Spec. Prog Pops	Person(s) Responsible	Timeline Start/End	Resources			Evaluation	
						Human	Material	Fiscal	Formative	Summative
C,D	1. The CAI Lab will be used to supplement instruction in reading, math and science at the student's level. Reports generated.	R CP	All Students	MySatori Lab Managers	Aug 09- May 10	Lab Managers	MySatori Curr,	L, C, SpEd, T1	Increase in Student Achievement.	Success measured by grades and TAKS.
C,D	2. A departmentalization schedule in grades 4 & 5 and a team-teaching schedule in grade 3 will continue.	R M	All Students	Teachers Principal	Aug 09- May 10	Teachers	Master Schedule	L, ARI,AMI T1	Increase in Student Achievement.	Success measured by grades and TAKS.
C,D	3. SSI instruction in reading and math will be provided for 3 <sup>rd</sup> , 4 <sup>th</sup> , 5 <sup>th</sup> grade identified students.	I M	All Students	Teachers Principal	Aug 09- May 10	SSI Teachers	Supplemental Curriculum	L, ARI,AMI T1,SCE	Increase in Student Achievement.	Success measured by grades and TAKS.
C,D	4. Kilgo Scope/Sequence and Placemats will be followed in Lang. Arts, Reading, Math, Science, and Social Studies for grades 3, 4, and 5.	R	All students	Principal Teachers	Aug 09- May 10	Teachers	Placemats Kilgo Scope/Sequence	L	Increase in Student Achievement.	Success measured by grades and TAKS.
C,D	5. Homework Detention Time will be set in daily schedule for students who need help completing work.	R,M	All students	Teachers Principal	Aug 09- May 10	Teachers Principal		L	Increase in Student Achievement.	Success measured by grades and TAKS.
C,D	6. Teacher Assistants will support classroom instruction	I,M	Identified Students	SSI Teacher	Aug 09- May 10	Teacher Assistant		SCE	Increase in Student Achievement.	Success measured by grades and TAKS.
C,D	7. M. Eaton Math and Science Dailies will be utilized.	R,M	All Students	Teacher Principal	Aug 09- May 10	Teachers	Math That Works	L, T1	Increase in Student Achievement.	Success measured by grades and TAKS.
C,D	8. Benchmark test data will focus instruction.	R,A	All Students	Teacher Principal	Oct 09 – July 10	Teachers	Released Tests	L, T1	Increase in Student Achievement.	Success measured by grades and TAKS.

**Codes for Funding: S-State L-Local F-Federal T1-Title 1 T2-Title 2 T3-Title 3 C-Compensatory A-ARI/AMI**

**MARY DESHAZO ELEMENTARY SCHOOL  
2009 - 2010 Campus Improvement Plan**

**GOAL 1:**  
*DeShazo will provide a comprehensive instructional environment to ensure all students meet grade promotion requirements.*

**Objective:**  
7. A minimum of 90% of the students will meet minimum expectations on state assessments.

**Schoolwide Component**  
R = Reform Strategies  
I = Instruction by Highly Qualified Staff  
PD = Professional Development  
H = Highly Qualified Staff  
PI = Parental Involvement  
T = Transition  
A = Assessment  
M = Accelerated Instruction for Mastery  
CP = Coordination of all programs

Needs Assmt	Action(s) Implementation(s)	SW Comp.	Spec. Prog Pops	Person(s) Responsible	Timeline Start/End	Resources					Formative	Summative
						Human	Material					
C,D	1. The CAI Lab will be used to supplement instruction in reading, math, and science at the student's level. MySatori software will be used. Reports will show growth.	R CP M A	All Students	MySatori Lab Managers	Aug 09- May 10	Lab Managers	MySatori Curr, MySatori Curr.	L, SpEd, T1, T3	Increase in Student Achievement.	Success measured by grades and TAKS.		
C,D	2. A minimum of two benchmarks will be given to determine student strengths and weaknesses in TAKS tested areas.	R A	All Students	Principal Teachers	Oct. 09 Dec. 09		Testing Material AEIS-IT	L T1	Increase in Student Achievement.	Success measured by grades and TAKS.		
C,D	3. Campus assessments will be given to determine student mastery of TEKS. Webcatt will be used to develop assessments.	R A	All Students	Principal Teachers	Aug 09- May 10	Teachers	Webcatt TEKS Placemat Assess.	L T1	Increase in Student Achievement.	Success measured by grades and TAKS.		
C,D	4. Campus Assessments and Benchmarks will be provided in English and Spanish and at designated IEP level for SpEd students.	R A CP	LEP and SPED Students	Principal Teachers	Aug 09- May 10		Testing Material	L T1	Increase in Student Achievement.	Success measured by grades and TAKS.		
C,D,H	5. Benchmark Data will be discussed with students and parents. SSI information will be given to parents of 5 <sup>th</sup> grade students.	PI A	All Students	Principal Teacher	Nov. 09 Feb 10		Reports SSI Brochures	L	Increase in Student Achievement.	Success measured by grades and TAKS.		
C,D	6. TAKS Academies will be provided for identified students.	M	Identified students	Principal Teachers	Feb. 10- Apr 10	Teachers	Materials	L T1	Increase in Student Achievement.	Success measured by grades and TAKS.		
C,D	7. Kilgo methods will be implemented fully.	R,M	All Students	Principal Teachers	Aug 09- May 10	Teachers	Kilgo Notebooks	L	Increase in Student Achievement.	Success measured by grades and TAKS.		

**Codes for Funding: S-State**

**L-Local**

**F-Federal**

**T1-Title I**

**T2-Title 2**

**T3-Title 3**

**C-Compensatory**

**A-ARI/AMI**

**MARY DESHAZO ELEMENTARY SCHOOL  
2009 - 2010 Campus Improvement Plan**

**Schoolwide Component**  
 R = Reform Strategies  
 I = Instruction by Highly Qualified Staff  
 PD = Professional Development  
 H = Highly Qualified Staff  
 PI = Parental Involvement  
 T = Transition  
 A = Assessment  
 M = Accelerated Instruction for Mastery  
 CP = Coordination of all programs

**GOAL 1:**  
*DeShazo will provide a comprehensive instructional environment to ensure all students meet grade promotion requirements.*

**Objective:**  
 7. A minimum of 90% of the students will meet minimum expectations on state assessments.

Needs Assmt	Action(s) Implementation(s)	SW Comp.	Spec. Prog Pops	Person(s) Responsible	Timeline Start/End	Resources				
						Human	Material	Fiscal		
									Formative	Summative
C,H	8. TAKS Parent Meetings and Conferences will be held.	PI	All Students	Teachers	Oct. 09 Feb. 10 May 10	Teachers	Reports	L	Increase in Student Achieve.	Success measured TAKS/TAKSM/TAKSA
C,E	9. TAKS/Kilgo Staff Development opportunities will be provided for teachers.	PD	All Students	Principal Teachers	June 09- Apr 10	Reg. 17 Conference	Conferences	L,T2 SCE T1,T3	Increase in Student Achievement.	Success measured by grades and TAKS/TAKSM/TAKSA
C,D	10. AEIS-IT On-Line Program will be used for data reports.Staff will be trained	R	All Students	Principal Teachers	Oct. 09 – May 10		AEIS-IT	L	Increase in Student Achievement.	Success measured by grades and TAKS/TAKSM/TAKSA
C,H	11. Grade Placement Committees will convene as needed.	R PI	All Students	Principal Teachers	Feb 10– July 10	Teachers	Forms	L	Increase in Student Achievement.	Success measured by grades and TAKS/TAKSM/TAKSA
C,D	12. CIS will provide Homework Heroes after school program.	R	All Students	Principal Teachers	Aug 09- May 10	Teachers		CIS	Increase in Student Achievement.	Success measured by grades and TAKS/TAKSM/TAKSA
C,H,J	13. Transition meetings will be held for all students at the end of the school year.	CP	All Students	Principal Teachers	May 10	Teachers	Student Folders		Increase in Student Achievement.	Success measured by grades and TAKS/TAKSM/TAKSA
C,D	14. Teachers will be provided with list of at-risk students and reason for qualification.	R	At-Risk Students	Dir of Student Services	Aug 09- May 10		At-Risk List		Increase in Student Achievement.	Success measured by grades and TAKS/TAKSM/TAKSA
C,D	15. Students not passing reading/math TAKS will attend mandatory summer school.	R	At-Risk Students	Principal	June 10	Teachers	Curr.	L, T1, SCE	Increase in Student Achievement.	Success measured by grades and TAKS/TAKSM/TAKSA

**Codes for Funding: S-State      L-Local      F-Federal      T1-Title I      T2-Title 2      T3-Title 3      C-Compensatory      A-ARI/AMI**

**MARY DESHAZO ELEMENTARY SCHOOL  
2009 - 2010 Campus Improvement Plan**

**Schoolwide Component**

R = Reform Strategies  
I = Instruction by Highly Qualified Staff  
PD = Professional Development  
H = Highly Qualified Staff  
PI = Parental Involvement  
T = Transition  
A = Assessment  
M = Accelerated Instruction for Mastery  
CP = Coordination of all programs

**GOAL 1:**

*DeShazo will provide a comprehensive instructional environment to ensure all students meet grade promotion requirements.*

**Objective:**

8. DeShazo Elementary will provide programs that address the needs of all students and reflect the changes in campus demographics.

Needs Assmt	Action(s) Implementation(s)	SW Comp.	Spec. Prog Pops	Person(s) Responsible	Timeline Start/End	Resources				
						Human	Material	Fiscal	Formative	Summative
C,H	1. TAKS Parent Meetings and Conferences will be held.	PI	All Students	Teachers	Aug 09- July 10	Teachers	Reports	L	Increase in Student Achievement.	Success measured by grades and TAKS/TAKSM/TAKSA
C,D,K	2. DeShazo will adhere to the district Bilingual/LEP improvement plan.	R	LEP Students	Principal Teachers	Ongoing	Teachers	District Bilingual plan	L, T3	Increase in LEP Student Achievement.	Success measured by grades and TAKS/TAKSM/TAKSA
C,D, K, L, M	3. CIS – after school program – will be provided to assist students.	R, I, M	All Students	CIS Coordinator	Nov 09- May 10	CIS Coordinator Volunteer		CIS Funds	Increase in Student Achievement.	Success measured by grades and TAKS/TAKSM/TAKSA
C,C	4. Staff development will be provided to meet the needs of all student groups.	PD	All Students	Principal Teachers	Aug 09- May 10	Teachers Region 17		T1, T3, L	Increase in Student Achievement.	Success measured by grades and TAKS/TAKSM/TAKSA
C,D,A,H	5. Attendance rate will be monitored to exceed 95%.	PI, R	All Students	Principal Teachers Secretary	Aug 09- May 10	Secretary	RSCCC		Increase in Student Achievement.	Success measured by grades and TAKS/TAKSM/TAKSA
C,D,A	6. Attendance incentives will be held each semester.	R	All Students	Principal	Aug 09- May 10	C of C Committee	Attend. Records	L	Increase in perfect attendance.	Success measured by grades and TAKS/TAKSM/TAKSA
J	7. Homeless students will be referred to district homeless liaison.	R	All Students	Principal	Aug 09- May 10	Homeless Liaison			Increase in Student Achievement.	Success measured by grades and TAKS/TAKSM/TAKSA
D	8. 504 meetings will be held annually.	R	504 Students	Dir. Student Services	Aug 09- May 10		504 Folders		Increase in Student Achievement.	Success measured by grades and TAKS/TAKSM/TAKSA

**Codes for Funding: S-State L-Local F-Federal T1-Title I T2-Title 2 T3-Title 3 C-Compensatory A-ARI/AMI**

**MARY DESHAZO ELEMENTARY SCHOOL  
2009 - 2010 Campus Improvement Plan**

**Schoolwide Component**  
 R = Reform Strategies  
 I = Instruction by Highly Qualified Staff  
 PD = Professional Development  
 H = Highly Qualified Staff  
 PI = Parental Involvement  
 T = Transition  
 A = Assessment  
 M = Accelerated Instruction for Mastery  
 CP = Coordination of all programs

**GOAL 1:**  
*DeShazo will provide a comprehensive instructional environment to ensure all students meet grade promotion requirements.*

**Objective:**  
 9. Technology will be utilized to improve all student performance.

Needs Assmt	Action(s) Implementation(s)	SW Comp.	Spec. Prog Pops	Person(s) Responsible	Timeline Start/End	Resources			Evaluation	
						Human	Material	Fiscal	Formative	Summative
C,D,J	1. All students will receive CAI instruction in reading, math, science.	R	All Students	MySatori Lab	Aug 09- May 10	MySatori Lab Personnel	CAI Lab	C, T1, T3, L	Increase in student achievement	Success measured by grades and TAKS/TAKSM/TAKSA
D, G	2. Campus Star Chart and Technology Plan will be updated annually.	R	All Students	Principal	Oct. 09		STAR Chart		Increase in student achievement	Success measured by grades and TAKS/TAKSM/TAKSA
D,G	3. Technology will be updated/maintained annually with purchase of new hardware. My Satori/Renaissance Place/GradeBook/Type to Learn.	R	All Students	Principal Technology	Aug 09- May 10		Hardware	L, T1, T3	Increase in student achievement	Success measured by grades and TAKS/TAKSM/TAKSA
D	4. Students will attend technology class once weekly	R	All Students	Principal	Aug 09- May 10			L, T1, T3	Increase in student achievement	Success measured by grades and TAKS/TAKSM/TAKSA
D,G	5. Technology Assistants will be provided time daily to maintain technology systems at DeShazo.	R	All Students	Principal	Aug 09- May 10			L, T1, T3	Increase in student achievement	Success measured by grades and TAKS/TAKSM/TAKSA
D	6. ELMO projectors will be placed in new wing and in all math classrooms.	R	All students	Principal	May 09- May 10	Main.	ELMO	L	Increase in student achievement	Success measured by grades and TAKS/TAKSM/TAKSA
D	7. TMDS/TSDS will be updated utilized to support math/science instruction	R	All students	Principal MySatori Lab	Jan. 10- May 10	My Satori personnel	TMDS/ TSDS	L	Increase in student achievement	Success measured by grades and TAKS/TAKSM/TAKSA

**MARY DESHAZO ELEMENTARY SCHOOL  
2009 - 2010 Campus Improvement Plan**

**GOAL 1:**  
*DeShazo will provide a comprehensive instructional environment to ensure all students meet grade promotion requirements.*

**Objective:**  
10. DeShazo will reduce achievement gap between subgroups on TAKS tests. All student subgroup scores will be a minimum of 90%.

**Schoolwide Component**  
R = Reform Strategies  
I = Instruction by Highly Qualified Staff  
PD = Professional Development  
H = Highly Qualified Staff  
PI = Parental Involvement  
T = Transition  
A = Assessment  
M = Accelerated Instruction for Mastery  
CP = Coordination of all programs

Needs Assmt	Action(s) Implementation(s)	SW Comp.	Spec. Prog Pops	Person(s) Responsible	Timeline Start/End	Resources			Evaluation	
						Human	Material	Fiscal	Formative	Summative
C	1. Benchmark data will be used to identify at-risk students.	R, A, M	All Students	Principal Teacher	Nov. 09 / July 10	Staff	Tests AEIS_IT	L	Decrease in achievement gap.	Student Success as measured by grades and TAKS
C	2. TAKS Academies will be provided before each test	R, A, M	All Students	Principal Teacher	Feb. 10 July 10	Staff	TAKS Review	L	Decrease in achievement gap.	Student Success as measured by grades and TAKS
C	3. CIS will be utilized to support academic achievement of At-Risk students.	R, A, M	At-Risk Students	CIS Coordinator	Nov. 09 / May 10	CIS Coordinator		CIS Funds	Decrease in achievement gap.	Student Success as measured by grades and TAKS
C	4. Project MAP will provide tutorial help for Migrant students	R, A, M	Migrant	MEP Staff	Sept. 09/May 10	MEP Staff		Mig.	Decrease in achievement gap.	Student Success as measured by grades and TAKS
C	5. Schedule changes will be made as needed.	R	All Students	Principal Teacher	Aug. 09/May 10				Decrease in achievement gap.	Student Success as measured by grades and TAKS

**MARY DESHAZO ELEMENTARY SCHOOL  
2009 – 2010 Campus Improvement Plan**

**GOAL 2:**  
*DeShazo will incorporate proactive and consistent strategies to promote parental involvement and to address student respect and discipline.*

**Objective:**  
1. DeShazo Elementary will provide a safe physical environment.

**Schoolwide Component**  
 R = Reform Strategies  
 I = Instruction by Highly Qualified Staff  
 PD = Professional Development  
 H = Highly Qualified Staff  
 PI = Parental Involvement  
 T = Transition  
 A = Assessment  
 M = Accelerated Instruction for Mastery  
 CP = Coordination of all programs

Needs Assmt	Action(s) Implementation(s)	SW Comp.	Spec. Prog Pops	Person(s) Responsible	Timeline Start/End	Resources			Evaluation	
						Human	Material	Fiscal	Formative	Summative
H	1. Morning staff will report at 7:20 to facilitate bus drop off at front entrance	R	All Students	Principal	August 2009 – May2010	Staff				Master Facility Plan impacts Student Success
H	2. DeShazo staff will remain visible on the campus during class transistions.	R	All Students	Principal	August 2009 – May 2010	Staff		L		Master Facility Plan impacts Student Success
H	3. John Wooden's "The Journey to Success" will be utilized, modeled, discussed, taught, and implemented.	R	All Students	Principal	August 2009 – August 2010	Staff	Agenda Book			Master Facility Plan impacts Student Success
H	4. EOP Plan/Drills will be changed/practiced to provide safe environment for students in case of an emergency.	R	All Students	Principal	August 2009 – August 2010	Staff	Bags, Charts, Plan, List	L		Master Facility Plan impacts Student Success

**MARY DESHAZO ELEMENTARY SCHOOL  
2009 - 2010 Campus Improvement Plan**

<b>GOAL 2:</b> <i>DeShazo will incorporate proactive and consistent strategies to promote parental involvement and to address student respect and discipline.</i>	<b>Schoolwide Component</b> R = Reform Strategies I = Instruction by Highly Qualified Staff PD = Professional Development H = Highly Qualified Staff PI = Parental Involvement T = Transition A = Assessment M = Accelerated Instruction for Mastery CP = Coordination of all programs
<b>Objective:</b> 2. DeShazo will continue to implement a bullying awareness/prevention program.	

Needs Assmt	Action(s) Implementation(s)	SW Comp	Spec. Prog Pops	Person(s) Responsible	Timeline Start/End	Resources			Evaluation	
						Human	Material	Fiscal	Formative	Summative
A,I	1. A "0" tolerance policy will be enforced regarding bullying/gang related issues.	R	All Students	Staff/Principal	Aug.2009/ May 2010	Staff Principal	Code of Conduct		Fewer Instances	Student Success as measured by grades/TAKS
A,I	2. Room/class changes requested due to bullying will be granted.	R	All Students	Principal	Aug.2009/ May 2010	Staff Principal	Law Changes		Fewer Instances of Behavior	Student Success as measured by grades/TAKS
A, I, H	3. Student handbook will reflect law regarding bullying/gang related activities.	R	All Students	Principal	July 2009		Handouts	L	Fewer Instances of Behavior	Student Success as measured by grades/TAKS
A	4. Dress Code will be enforced.	R	All Students	Principal Staff	Aug.2009/ May 2010	Staff Principal			Fewer Instances of Behavior	Student Success as measured by grades/TAKS
A	5. The Journey to Success program will be implemented.	R	All Students	Music Teacher Staff	Aug 2009/ May 2010	Music Teacher	Handouts DVD		Fewer Instances of Behavior	Student Success as measured by grades/TAKS
A	6. Students will be rewarded for reporting/standing up to bullying behaviors	R	All Students	Principal Staff	Aug 2009/ May 2010				Fewer Instances of Behavior	Student Success as measured by grades/TAKS

Codes for Funding: S-State

L-Local

F-Federal

T1-Title I  
-29-

T2-Title 2

T3-Title 3

C-Compensatory

A-ARI/AMI

**MARY DESHAZO ELEMENTARY SCHOOL  
2009 - 2010 Campus Improvement Plan**

<b>GOAL 2:</b> <i>DeShazo will incorporate proactive and consistent strategies to promote parental involvement and to address student respect and discipline.</i>	<b>Schoolwide Component</b> R = Reform Strategies I = Instruction by Highly Qualified Staff PD = Professional Development H = Highly Qualified Staff PI = Parental Involvement T = Transition A = Assessment M = Accelerated Instruction for Mastery CP = Coordination of all programs
<b>Objective:</b> 3. DeShazo will consistently implement an effective Discipline Management program.	

Needs Assmt	Action(s) Implementation(s)	SW Comp	Spec. Prog Pops	Person(s) Responsible	Timeline Start/End	Resources			Evaluation	
						Human	Material	Fiscal	Formative	Summative
A,I	1. The DeShazo Student discipline plan and Circle of Champions Guidelines will be updated/ revised to ensure consistency with District Policy.	R	All Students	Campus Forum/Circle of Champions Committee	May '09 – July '09	Staff Campus Forum	Plan		Fewer Office Referrals	Student Success as measured by grades/TAKS
A,I	2. The DeShazo Student Handbook will be revised and updated to reflect changes in legislation, Circle of Champions, discipline plan and dress code.	R	All Students	Principal	July, 2009	Principal Campus Forum Staff		L	Fewer Office Referrals	Student Success as measured by grades/TAKS
A	3. Discipline policy will be enforced according to District guidelines.	R	All Students	Principal Staff	Aug,2009-May,2010	Principal	Policy		Fewer Office Referrals	Student Success as measured by grades/TAKS
A	4. Dress code check will be conducted as needed.	R	All Students	DeShazo Staff	Aug,2009-May,2010	DeShazo Staff	Alternative Clothing	L	Fewer Violations	Student Success as measured by grades/TAKS
A	5. Discipline records will be maintained.	R	All Students	Principal	Aug,2009-May,2010	Principal	RSCCC Records	L	Number of Office Referrals	Student Success as measured by grades/TAKS

**Codes for Funding: S-State      L-Local      F-Federal      T1-Title I      T2-Title 2      T3-Title 3      C-Compensatory      A-ARI/AMI**

**MARY DESHAZO ELEMENTARY SCHOOL  
2009 - 2010 Campus Improvement Plan**

**Schoolwide Component**  
 R = Reform Strategies  
 I = Instruction by Highly Qualified Staff  
 PD = Professional Development  
 H = Highly Qualified Staff  
 PI = Parental Involvement  
 T = Transition  
 A = Assessment  
 M = Accelerated Instruction for Mastery  
 CP = Coordination of all programs

**GOAL 2:**

*DeShazo will incorporate proactive and consistent strategies to promote parental involvement and to address student respect and discipline.*

**Objective:**

3. DeShazo will consistently implement an effective Discipline Management program.

Needs Assmt	Action(s) Implementation(s)	SW Comp	Spec. Prog Pops	Person(s) Responsible	Timeline Start/End	Resources			Evaluation	
						Human	Material	Fiscal	Formative	Summative
A,H	6. Principal/Teachers will contact parents according to Circle of Champions/Campus Discipline Policy Guidelines.	R	All Students	Staff/Principal	Aug.2009/ May 2010	Staff Principal	Parent Phone Numbers/ Addresses		Fewer Discipline Problems	Student success as measured by grades/TAKS
A,H	7. Student Handbook will be published in Student Agenda.	R	All Students	Principal	July 2009	Principal	Handbook Agenda	L	Fewer Discipline Problems	Student success as measured by grades/TAKS
A,H, I	8. Student Code of Conduct will be provided in both English and Spanish.	R	All Students	Principal/ Secretary	Aug. 2009	Secretary	Spanish Code of Conduct	L	Fewer Discipline Problems	Student Success as measured by grades/TAKS
A,H,I	9. Parent Notification of discipline referrals will be provided in Spanish as needed.	R	All Students	Staff/Principal/Secretary	Aug.2009/ May 2010	Staff Principal Secretary	Parent Phone Numbers		Fewer Discipline Problems	Student Success as measured by grades/TAKS
A	10. Student orientation will be held to inform students of changes in Circle of Champions guidelines/Student Handbook.	R	All Students	Principal	Aug. 2009	Principal	Student Handbook		Fewer Discipline Problems	Student Success as measured by grades/TAKS
A	11. Lunch Detention time will be provided for students who have excessive checks.	R	All Students	Principal	Aug.2009/ May 2010	Staff Principal Secretary			Fewer Discipline Problems	Student Success as measured by grades/TAKS

**Codes for Funding: S-State L-Local F-Federal T1-Title I T2-Title 2 T3-Title 3 C-Compensatory A-ARI/AMI**

**MARY DESHAZO ELEMENTARY SCHOOL  
2009 - 2010 Campus Improvement Plan**

<b>GOAL 2:</b> <i>DeShazo will incorporate proactive and consistent strategies to promote parental involvement and to address student respect and discipline.</i>							<b>Schoolwide Component</b> R = Reform Strategies I = Instruction by Highly Qualified Staff PD = Professional Development H = Highly Qualified Staff PI = Parental Involvement T = Transition A = Assessment M = Accelerated Instruction for Mastery CP = Coordination of all programs			
<b>Objective:</b> 3. DeShazo will consistently implement an effective Discipline Management program.										
Needs Assmt	Action(s) Implementation(s)	SW Comp.	Spec. Prog Pops	Person(s) Responsible	Timeline Start/End	Resources			Evaluation	
						Human	Material	Fiscal	Formative	Summative
B	12. The Journey to Success curriculum will be presented to all students by DeShazo Staff.	R	All Students	Staff.	Aug. 2009/ May 2010		Journey to Success	L, F	Fewer Office Referrals	Student Success as measured by grades and TAKS
A	13. DeShazo will comply with Gun Free Schools Act and will expel any student bringing a weapon to school.	R	All Students	Principal	Aug. 2009/ May 2010	Principal	Referral		No weapon violations.	Student Success as measured by grades and TAKS
A	14. Students found possessing alcohol/drugs at school will be disciplined according to MISD Code of Conduct.	R	All Students	Principal	Aug. 2009/ May 2010	Principal	Referral		No drug/alcohol violations.	Student Success as measured by grades and TAKS
B	15. Director of Student Services will provide counseling services to identified students.	R	All Students	Dir. Of Student Ser.	Aug. 2009/ May 2010	Dir. Of Student Services		L,F	Fewer Office Referrals	Student Success as measured by grades and TAKS
B	16. CIS Coordinator will provide group counseling services for identified students to enhance character traits.	R	All Students	CIS Coord.	Aug. 2009/ May 2010	CIS Coord		L,F	Fewer Office Referrals	Student Success as measured by grades and TAKS

**Codes for Funding: S-State      L-Local      F-Federal      T1-Title I      T2-Title 2      T3-Title 3      C-Compensatory      A-ARI/AMI**

**MARY DESHAZO ELEMENTARY SCHOOL  
2009 - 2010 Campus Improvement Plan**

<b>GOAL 2:</b> <i>DeShazo will incorporate proactive and consistent strategies to promote parental involvement and to address student respect and discipline.</i>						<b>Schoolwide Component</b> R = Reform Strategies I = Instruction by Highly Qualified Staff PD = Professional Development H = Highly Qualified Staff PI = Parental Involvement T = Transition A = Assessment M = Accelerated Instruction for Mastery CP = Coordination of all programs				
<b>Objective:</b> 4. The approved sex education materials will be presented at DeShazo.										
Needs Assmt	Action(s) Implementation(s)	SW Comp.	Spec. Prog Pops	Person(s) Responsible	Timeline Start/End	Resources			Evaluation	
						Human	Material	Fiscal	Formative	Summative
B	1. Teen-Aid (abstinence based sex education) curriculum will guide presentations to 5 <sup>th</sup> grade students.	R	5 <sup>th</sup> Grade students	PE Teacher Nurse	May 10	Staff Members	Teen-Aid Curr.	L	Decrease in number of teenage pregnancies.	Student Success as measured by grades and TAKS
B	2. Journey to Success curriculum will be presented to all students.	R	All Students	Dir. Of Student Ser.	Aug. 09/ May 10	Staff Members		L	Decrease in office referrals.	Student Success as measured by grades and TAKS
B	3. Identified students will be provided with PRS services.	R	Identified Students	Nurse	Aug. 09/ May 10	Nurse		F	Decrease in number of teenage pregnancies.	Student Success as measured by grades and TAKS
A,B	4. Hands-off policy will be strictly enforced.	R	All Students	Staff/ Principal	Aug. 09/ May 10	Staff/ Principal			Decrease in number of teenage pregnancies.	Student Success as measured by grades and TAKS
A,B	5. Dress code will be enforced.	R	All Students	Staff/ Principal	Aug. 09/ May 10	Staff/ Principal			Decrease in office referrals.	Student Success as measured by grades and TAKS
A,B	6. Health Advisory Committee will approve all health related curriculum/activities presented to students.	R	All Students	Dir. Of Student Services	Aug. 09/ May 10	Health Advisory Comm.				Student Success as measured by grades and TAKS

**Codes for Funding: S-State      L-Local      F-Federal      T1-Title I      T2-Title 2      T3-Title 3      C-Compensatory      A-ARI/AMI**

**MARY DESHAZO ELEMENTARY SCHOOL  
2009 - 2010 Campus Improvement Plan**

<p><b>GOAL 2:</b> <i>DeShazo will incorporate proactive and consistent strategies to promote parental involvement and to address student respect and discipline.</i></p>	<p><b>Schoolwide Component</b>  R = Reform Strategies  I = Instruction by Highly Qualified Staff  PD = Professional Development  H = Highly Qualified Staff  PI = Parental Involvement  T = Transition  A = Assessment  M = Accelerated Instruction for Mastery  CP = Coordination of all programs</p>
<p><b>Objective:</b> 5. DeShazo will instill, promote, and model positive character traits to promote leadership.</p>	

Needs Assmt	Action(s) Implementation(s)	SW Comp.	Spec. Prog Pops	Person(s) Responsible	Timeline Start/End	Resources			Evaluation	
						Human	Material	Fiscal	Formative	Summative
A,B	1. Muleville Constitution will be revised to reflect changes to discipline plan.	R	Muleville Board of Directors	Principal	Aug. 2009	Principal	Constitution	L	Decrease in office referrals.	Student Success as measured by grades and TAKS
A,B	2. Muleville Board of Directors will follow behavior requirements in order to maintain position on Muleville Board.	R	Muleville Board of Directors	Principal Muleville Sponsors	Aug. 2009/ May 2010	Principal Muleville Sponsors	Constitution	L	Decrease in office referrals.	Student Success as measured by grades and TAKS
A,B	3. Parents of Muleville Board of Directors will be given a copy of constitution and will sign acknowledgement of rules with their child.	PI	Muleville Board of Directors	Principal	Aug. 2009	Principal	Agreement	L	Decrease in office referrals.	Student Success as measured by grades and TAKS
B	4. All staff will be positive role-models for students.	R	All Students	Staff	Aug. 2009/ May 2010	Staff			Decrease in office referrals.	Student Success as measured by grades and TAKS
B	5. Staff will be visible in halls and consistent with student discipline.	R	All Students	Staff	Aug. 2009/ May 2010	Staff			Decrease in office referrals.	Student Success as measured by grades and TAKS

**Codes for Funding: S-State      L-Local      F-Federal      T1-Title I      T2-Title 2      T3-Title 3      C-Compensatory      A-ARI/AMI**

**MARY DESHAZO ELEMENTARY SCHOOL  
2009 - 2010 Campus Improvement Plan**

**Schoolwide Component**  
 R = Reform Strategies  
 I = Instruction by Highly Qualified Staff  
 PD = Professional Development  
 H = Highly Qualified Staff  
 PI = Parental Involvement  
 T = Transition  
 A = Assessment  
 M = Accelerated Instruction for Mastery  
 CP = Coordination of all programs

**GOAL 4:**  
*DeShazo will recruit and maintain a highly qualified staff to meet the educational needs of all students.*

**Objective:**  
 1. All students will be taught by “highly qualified” teachers.

Needs Assmt	Action(s) Implementation(s)	SW Comp.	Spec. Prog Pops	Person(s) Responsible	Timeline Start/End	Resources			Evaluation	
						Human	Material	Fiscal	Formative	Summative
E	1. Applicants who meet the qualifications of “Highly Qualified Staff” will be interviewed to fill vacancies.	I,H	All Students	Principal Campus Forum	May – August 2010	Principal Applicants Campus Forum	NCLB Guide	L	Increase in Student Achievement.	Student Success as measured by grades and TAKS
E	2. Applicants with Bilingual/ESL certifications will be sought.	I,H	LEP Students	Principal Campus Forum	Aug. 2009 – Aug – 2010	Principal Applicants Campus Forum		L	Increase in LEP Student Achievement.	Student Success as measured by grades and TAKS
E	3. Staff Development opportunities will be provided for personnel needing training to fulfill certification requirements.	PD H	All Students	Principal Staff	May 2009 – Aug 10	Trainers		L, T2	Increase in Student Achievement.	Student Success as measured by grades and TAKS
E	4. MISD will offer competitive salaries and stipends for specialized/critical needs areas.	H	All Students	Supt.	Ongoing	SCE-		SCE	Increase in Student Achievement.	Student Success as measured by grades and TAKS
E	5. Interview Committees will be utilized to provide input on hiring process.	I,H	All Students	Principal	May – August 2010	Committee			Increase in Student Achievement.	Student Success as measured by grades and TAKS
E	6. Trainer of trainer model will be utilized to share information gained from staff development.	I,H	All Students	Principal Staff	May 2009 – Aug 10	Trainers		L, T2	Increase in Student Achievement.	Student Success as measured by grades and TAKS
E	7. New teachers will be assigned a mentor.	I,H	All Students	Principal Staff	May 2009 – Aug 10	Mentor		L, T2	Increase in Student Achievement.	Student Success as measured by grades and TAKS

**Codes for Funding: S-State L-Local F-Federal T1-Title I T2-Title 2 T3-Title 3 C-Compensatory A-ARI/AMI ---**

**MARY DESHAZO ELEMENTARY SCHOOL  
2009 - 2010 Campus Improvement Plan**

**Schoolwide Component**  
 R = Reform Strategies  
 I = Instruction by Highly Qualified Staff  
 PD = Professional Development  
 H = Highly Qualified Staff  
 PI = Parental Involvement  
 T = Transition  
 A = Assessment  
 M = Accelerated Instruction for Mastery  
 CP = Coordination of all programs

**GOAL 5:**  
*DeShazo will incorporate proactive and consistent strategies to communicate with all parents and community members.*

**Objective:**  
 1. DeShazo Elementary will improve communication to and involvement with all parents to ensure student success.

Needs Assmt	Action(s) Implementation(s)	SW Comp.	Spec. Prog Pops	Person(s) Responsible	Timeline Start/End	Resources				
						Human	Material	Fiscal	Formative	Summative
C,H	1. Open House, TAKS Parent Meetings and Conferences will be held.	PI	All Students	Teachers	Aug 09- May 10	Teachers	Reports	L	Increase in Student Achievement.	Success measured by grades and TAKS
H	2. Letters and communication sent home will be provided in both English and Spanish.	PI	All Students	Principal Secretary	Aug 09- May 10	Secretary	Letters	L	Increase in Student Achievement.	Success measured by grades and TAKS
C,D, H	3. Report card conferences will be held after the first and third six weeks.	PI	All Students	Principal Teachers	Oct. 09 Feb. 10	Teachers	Schedule	L	Increase in Student Achievement.	Success measured by grades and TAKS
H	4. Campus website will be updated to provide communication link for parents.	PI	All Students	Principal Webmaster	Ongoing	Webmaster		L	Increase in Student Achievement.	Success measured by grades and TAKS
H	5. CIS programs will support parental involvement.	R, PI	All Students	Principal CIS Coordinator	Oct. 09- May 10	CIS Coord.		L	Increase in parent involvement.	Success measured by grades and TAKS
H	6. Title 1 Parent Compacts will be presented and signed at the beginning of the school year.	PI	All Students	Secretary Teachers	Aug. 09	Secretary Teachers	Title 1 Compact	T1	Increase in Student Achievement.	Success measured by grades and TAKS
H	7. At-Risk meetings and forms will be held in conjunction with first parent conferences.	PI	All Students	Dir. St. Ser. Teachers	Oct. 09	Dir. St. Ser. Teachers	At-risk Forms	T1	Increase in Student Achievement.	Success measured by grades and TAKS

**Codes for Funding: S-State**

**L-Local**

**F-Federal**

**T1-Title I**

**T2-Title 2**

**T3-Title 3**

**C-Compensatory**

**A-ARI/AMI**

**MARY DESHAZO ELEMENTARY SCHOOL  
2009 - 2010 Campus Improvement Plan**

**Schoolwide Component**

R = Reform Strategies  
I = Instruction by Highly Qualified Staff  
PD = Professional Development  
H = Highly Qualified Staff  
PI = Parental Involvement  
T = Transition  
A = Assessment  
M = Accelerated Instruction for Mastery  
CP = Coordination of all programs

**GOAL 5:**

*DeShazo will incorporate proactive and consistent strategies to communicate with all parents and community members.*

**Objective:**

1. DeShazo Elementary will improve communication to and involvement with all parents to ensure student success.

Needs Assmt	Action(s) Implementation(s)	SW Comp.	Spec. Prog Pops	Person(s) Responsible	Timeline Start/End	Resources			Formative	Summative
						Human	Material	Fiscal		
H	8. All DeShazo students will preregister to assure correct addresses/phone numbers	R PI	All Students	Secretaries	August 09	Secretary	Forms	L	Increase in Involvement	Success measured by grades and TAKS
H	9. Summer information packets will be sent to all students to inform parents of changes to discipline plan, dress code.	R PI	All Students	Principal Secretaries	July 09	Secretary	Letters	L	Increase in Parental Involvement	Success measured by grades and TAKS
H	10. A translator will be provided at all parent meetings and conferences as needed.	PI	LEP Students	Principal	Aug 09- May 10	Interpreter			Increase in Parental Involvement	Success measured by grades and TAKS
H	11. Parent Portal use will be encouraged.	R	All Students	Teacher Secretary	Aug 09 - May 10	Secretary	Sign up Form		Increase in Parental Involvement	Success measured by grades and TAKS
H	12. Parent and community representatives will help in campus decision making by serving on campus forum.	PI	All Students	Principal	Aug 09- May 10	Members Campus Forum	Notices	L	Increase in Parental Involvement	Success measured by grades and TAKS
H	13. Local news agency will be notified of special events at DeShazo.	PI	All Students	Principal	Aug 09- May 10		Notices		Increase in Parental Involvement	Success measured by grades and TAKS
H	14. A Parent Involvement Policy will be in handbook.	PI	All Students	Principal Campus Forum	July 09	Campus Forum Parents	Parent Involvement Policy		Increase in Parental Involvement	Success measured by grades and TAKS
H	15. Conduct an annual Title I meeting with parents in order to inform them of the school's participation in Title 1, Part A and to explain parental role.	PI	All Students	Principal	Nov. 09		Title 1 Policy		Increase in Parental Involvement	Success measured by grades and TAKS

**Codes for Funding: S-State**

**L-Local**

**F-Federal**

**T1-Title I**

**T2-Title 2**

**T3-Title 3**

**C-Compensatory**

**A-ARI/AMI**

**Mary DeShazo Campus Action Plan  
2009-2010 Approval Page – Signatures of Campus Staff and Campus Forum – on Last Page**

<b>Member Name/Position</b>	<b>Signature</b>
Nancy Benham – Teacher	
Donna McFadden – Teacher	
Tanya Steinbock – Teacher	
Shelly Turnbow – Teacher	
Lynda Washington – Teacher Assistant	
Jan King – Student Services Coordinator	
Brian Arnold – Federal Programs Director	
Sherry Kennedy – Community Member	
Shelby Kennedy – Community Member	
Tiffany Boehning – Parent	
Delton Wilhite – Business	
Debbie Gallman – Principal	

# **Appendix 'A'**

## **State Compensatory Ed.**

### **Budget**

DeShazo Elementary State Comp Ed Budget 2009-10	
Function - OBJECT	DeShazo
<b>*Salaries include benefits</b>	
11-Teacher Salaries	181,853
11-T.A. Salaries	18,587
11-Substitutes	3,691
11-Tutorials/Extra Duty	1,538
11-Homebound (PRS) Salary	-
11-Summer School Duty	-
<b>TOTAL SALARIES</b>	<b>205,669</b>
11-Contracted Services	4,600
11-Supplies	6,500
11-Summer School Supplies	-
11-Travel & Other	-

# **MULESHOE ISD**

## **2009-10 District Plan for NCLB Teacher Quality (100% HQ)**

<b>Performance Indicator</b>	<b>Current Status</b>	<b>Strategies</b>	<b>Timeline</b>	<b>Funding Source</b>
Recruit and Retain teachers to maintain 100% classes taught by HQ teachers	MISD has 100% of teachers HQ	MISD will recruit HQ teachers via college job fairs, district website, ESC resources & trade magazines for HQ teachers as needed, \$2000 above base pay, specialty areas receive stipends. \$10,000 signing bonus and \$300 stipend per each class taught in math and science.	August 2009-May 2010 (as needed)	Federal, State
Professional development to meet NCLB section 1119, Teacher Quality Annual measurable objective (Title I campuses)	MISD currently requires all teachers to attend onsite PD – teachers also encourage attending workshops in teaching field.	MISD will continue to require PD & encourage 30 hour staff development continuous improvement yearly. Core staff members will attend Margaret Kilgo workshops in Austin.	August 2009 – August 2010	Title II Part A Local
How the district will meet the NCLB Section 1119 HQ teacher requirements ( Title I campuses)	MISD currently meets NCLB section 1119 HQ teacher requirements	MISD will continue to hire HQ teachers and encourage secondary teachers to achieve HQ status in other fields	August 2009- August 2010	Title II Part A Local
Working with campuses to develop and implement HQ strategies/activities (Title I campuses)	MISD currently monitors all hiring of teachers and HQ status for all campuses	MISD will continue to work w/ campus administration to monitor teachers HQ status	August 2009 – August 2010	Title II Part A Local

## **MULESHOE ISD**

### **2009-10 District Plan for NCLB Teacher Quality (100% HQ)**

<b>Performance Indicator</b>	<b>Current Status</b>	<b>Strategies</b>	<b>Timeline</b>	<b>Funding Source</b>
The district will comply with HQ and professional development requirements (Title I campuses)	MISD currently monitors teacher certification renewals & requires 2 days on-site PD MISD	MISD will continue to encourage teachers to attend professional development & participate in local staff development	August 2009 – August 2010	Title II Part A Local
Ensure low-income and minority students are not taught at higher rates than other students by unqualified, out-of field, or inexperienced teachers.(Title I campuses)	MISD is single attendance area and is 100% HQ	MISD is single attendance area and is 100% HQ	August 2009 – August 2010	Title II Part A Local